

P A D P I M P S P R E S E N T S



# VINTAGE ORGANS

MULTISAMPLED TONEWHEEL & COMBO ORGANS FOR MPCs & AKAI FORCE



# Contents

<b>Vintage Organs (1.5 Edition): Introduction</b>	<b>3</b>
<b>1.5 Update: What's New?</b>	<b>4</b>
<b>What's Inside?</b>	<b>5</b>
<b>Install: Standalone MPC &amp; Akai Force</b>	<b>7</b>
<b>Loading Instruments (Standalone MPC/Force)</b>	<b>11</b>
<b>Install: MPC Software/MPC Beats App</b>	<b>15</b>
<b>Playing the Instruments with the Pads</b>	<b>21</b>
<b>Playing the Instruments with a MIDI Keyboard</b>	<b>27</b>
<b>Q-LINK and Mod Wheel Control</b>	<b>29</b>
<b>Further Resources</b>	<b>32</b>
<b>Copyright &amp; License</b>	<b>33</b>

# Vintage Organs (1.5 Edition): Introduction

- **Vintage Organs** is a collection of instruments created from five classic tonewheel and combo organs; the **Hammond B3** and **A-100**, the **Vox Continental**, the **Elka Panther 300**, and the **Farfisa Compact**.
- Each organ has been faithfully recorded and combined with the MPCs own FX, envelopes, filters & LFO to create 95 expressive instruments, all ready to load up and play 'out-of-the-box'.
- All keygroup programs are fully optimised for super-fast loading & minimal CPU and are categorized and tagged for easy browser searching/filtering. Program previews are provided for every single instrument so it's always easy to find the exact sound you need.
- This expansion is compatible with all modern MPCs running with MPC 2.10 (or greater). This expansion is also fully compatible with the **Akai Force**, the **MPC Software** and the **MPC Beats App**.

# 1.5 Update: What's New?

The latest 1.5 Update adds the following new features to the expansion:

- **New:** 45 Additional instruments created from the sounds of the Hammond A-100, Elka Panther and Farfisa Compact
- **New:** keyboard mod wheel control of vibrato
- **New:** Q-Link mapped control of reverb and autopan FX
- **Updated:** refreshed FX for all existing instruments
- **Updated:** various program parameters improvements for existing instruments
- **Changed:** Expansion now requires MPC 2.10+ or Akai Force 3.1+

# What's Inside?

Vintage Organs contains **95 custom instruments** for the MPC built from over 1700 multisampled and sustain looped sounds recorded from the following organs:

- Hammond B3 Tonewheel Organ
- Hammond A-100 Tonewheel Organ
- Vox Continental Combo Organ
- Elka Panther 300 ('Combo P')
- Farfisa Compact ('Combo F')

The sounds are combined with the MPC's own internal filters, envelopes, LFO & FX to produce playable keygroup instruments.

Each instrument is pre-mapped chromatically for you so you can just load and play; there's no need for any configuration or tweaking, simply listen to the instrument previews in the browser, load your chosen instruments into your project and start playing chords, riffs and melodies on your pads or an attached keyboard.

All instruments are fully memory-optimised so you can easily load dozens of these instruments into a standalone MPC/Force without any memory concerns whatsoever. And unlike MPC plugins, there is no '8 instance' limit with keygroup programs.

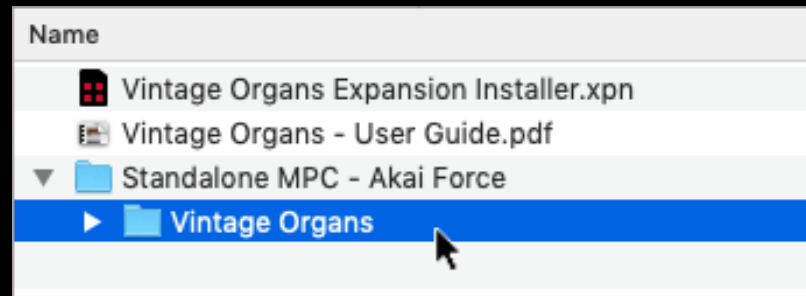
Everything is 100% compatible with PAD PERFORM ('Notes Mode') and the arpeggiator, while keyboard controllers can also utilise mod wheel control of vibrato.

We've also mapped each instrument's autopan and reverb controls to the Q-Links to give quick hands-on editing while you play.

# Install: Standalone MPC & Akai Force

*Note: You can view the most up-to-date expansion installation instructions here: <https://mpc-samples.com/article/standalone-mpc-force-expansion-installation>*

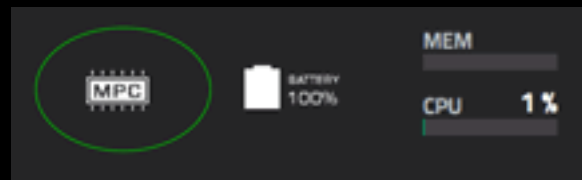
After downloading the expansion, extract the zip file contents to your computer. Enter the '**Standalone MPC-Akai Force**' folder and inside you'll see a sub folder '**Vintage Organs**' – this is the folder we're going to transfer to your MPC/Force.



Expansions must be installed to either an **SD card**, a **USB drive** or, if you have one, an internal **SATA disk**.

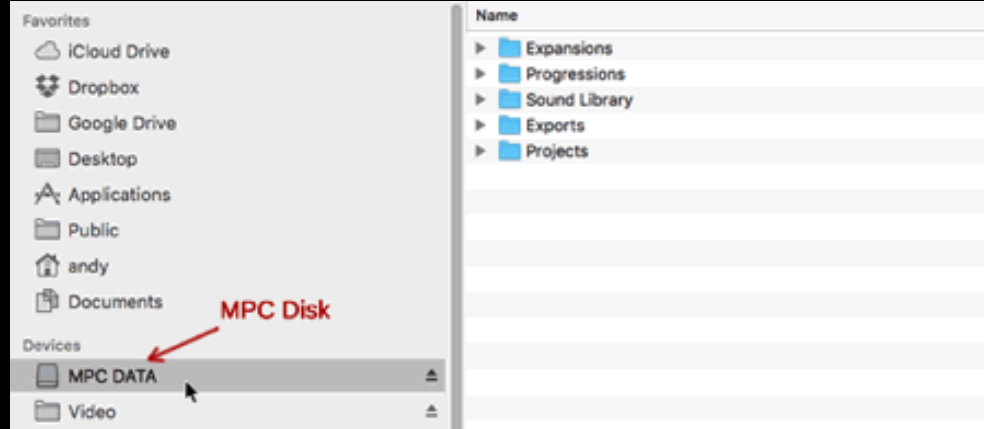
The first step is to mount this 'MPC disk' on your computer. If you use an SD card or USB disk, you can just eject the disk from your MPC/Force and physically insert it into your computer's SD card reader or USB port.

Alternatively, connect your MPC or Force via USB to your computer and go to **MENU** and hit the '**MPC chip**' icon at the top of the screen (this is the '**Laptop**' icon in the Force).

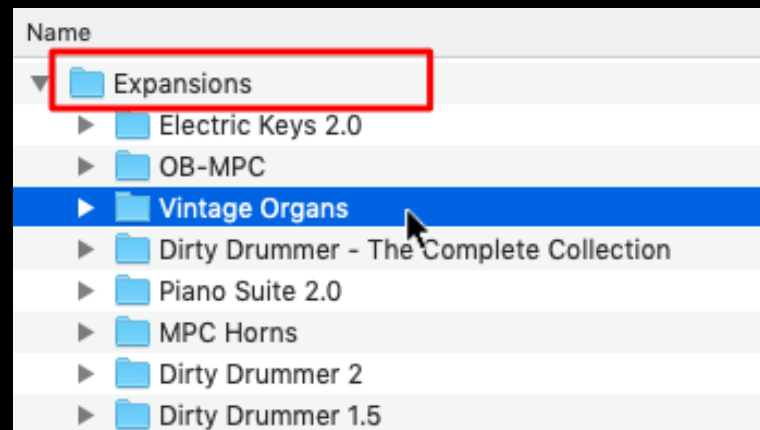


Now select **CONTROLLER MODE** ('**COMPUTER MODE**' in the Force).

Whichever connection method you choose, your MPC disk should now appear as a removable drive in your computer's file manager (e.g. Finder or File Explorer). Click on the drive to open its file system:



If it doesn't already exist, create a folder called **'Expansions'** in the root of your disk. Now copy the **'Vintage Organs'** standalone expansion folder *inside* this 'Expansions' folder.

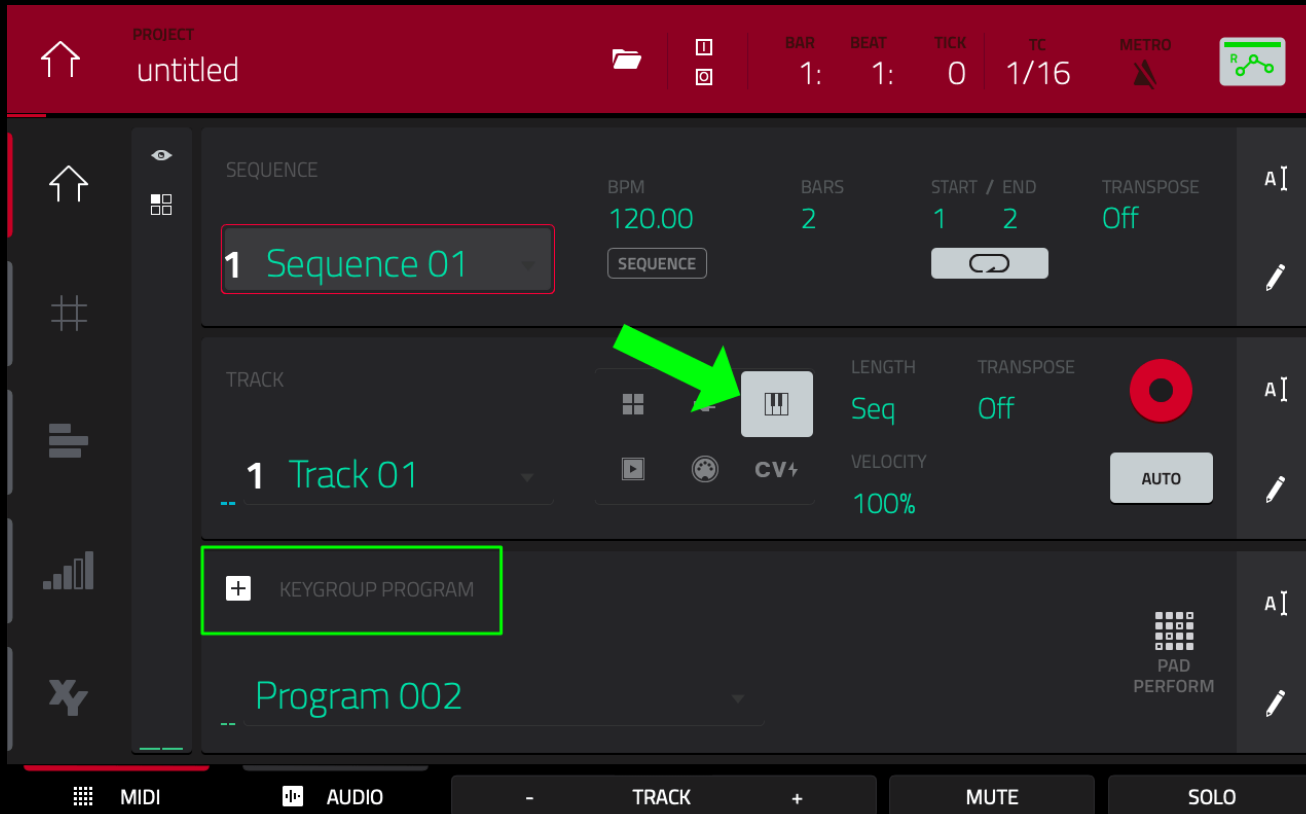


All done! If you had physically transferred the MPC disk to your computer you should now eject the disk from your computer and put the disk back in your MPC.

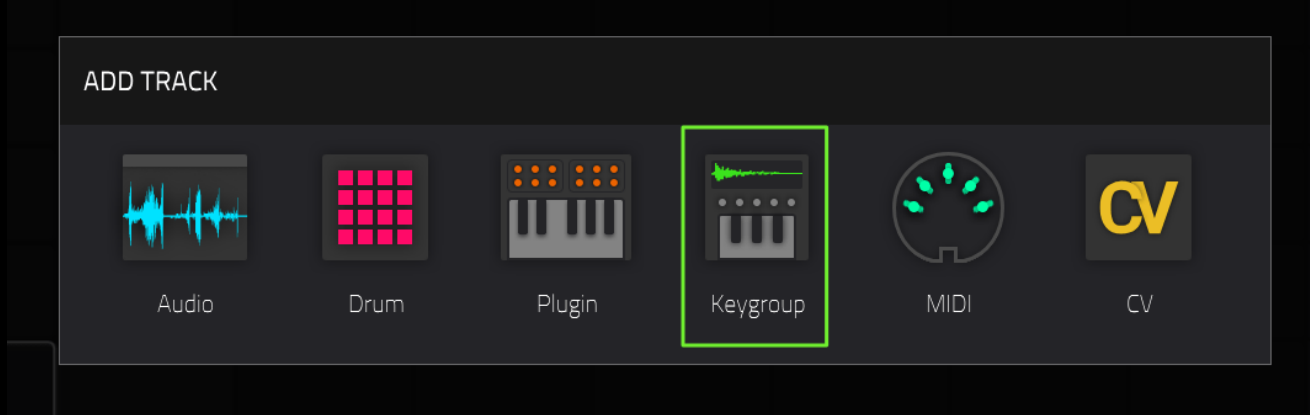
Alternatively, if you used USB transfer then go back to **MENU** and select the computer icon to return to standalone mode - *don't forget to eject/unmount the MPC from your computer first, this avoids any potential data loss.*

# Loading Instruments (Standalone MPC/Force)

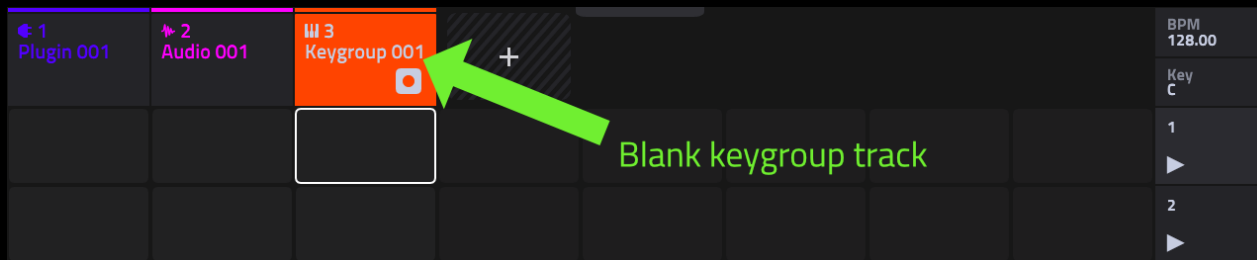
In your MPC, go to **MAIN** and create a **KEYGROUP** type track:



In the Force, hit the '+' icon in the touchscreen matrix and select a **Keygroup** track:

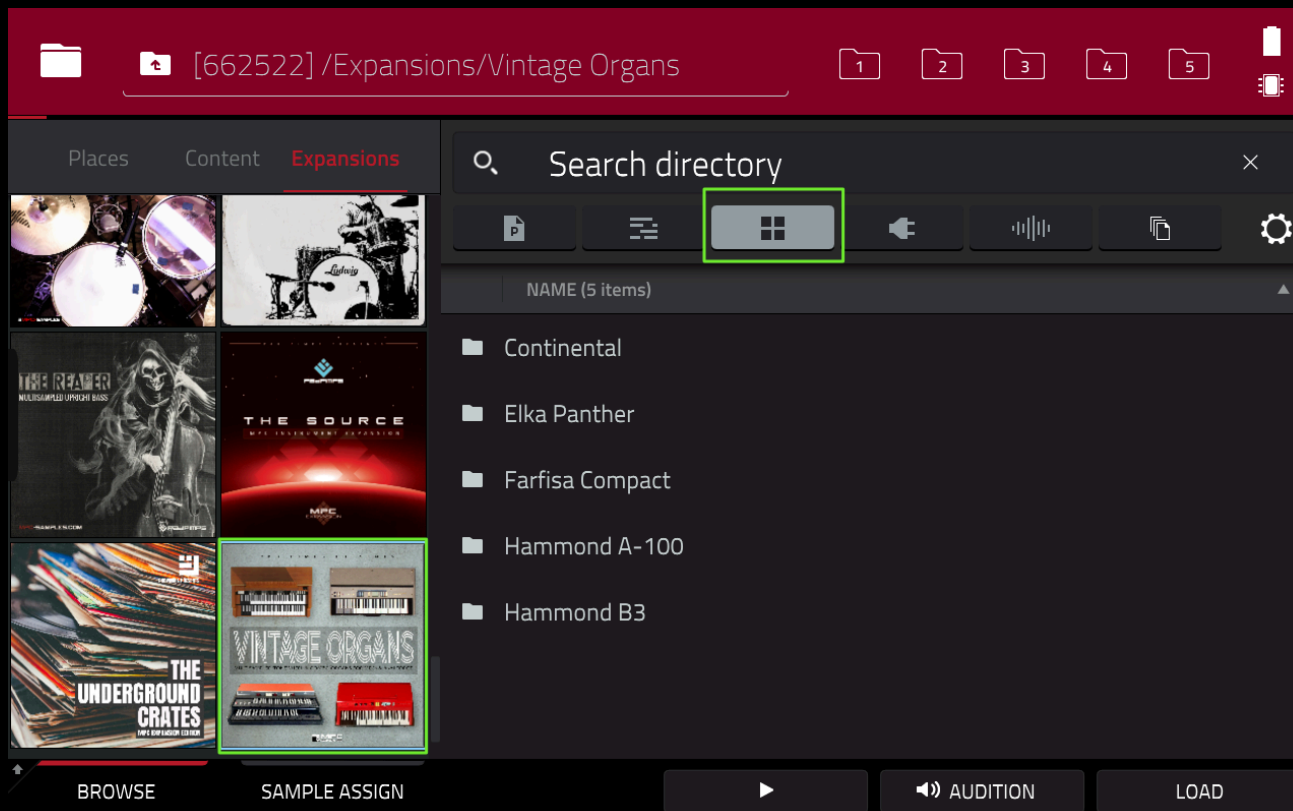


This adds a new blank keygroup track to the matrix:

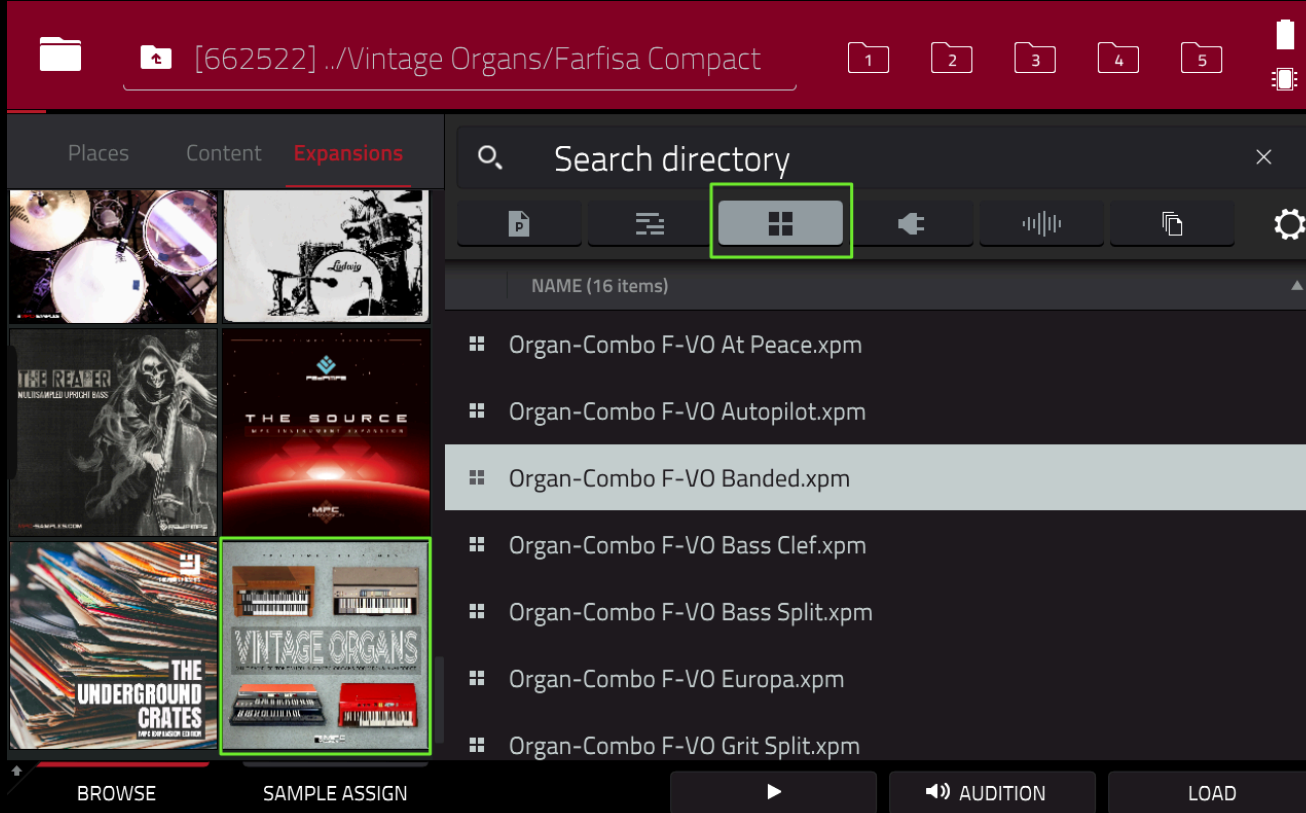


Now go to **'MENU > BROWSER > Expansions'** and tap on the **'Vintage Organs'**

thumbnail. On the right side, select the **PROGRAM** filter to view the instrument groups (organised by organ model):



Double tap to enter a folder to view the available instruments in this group:

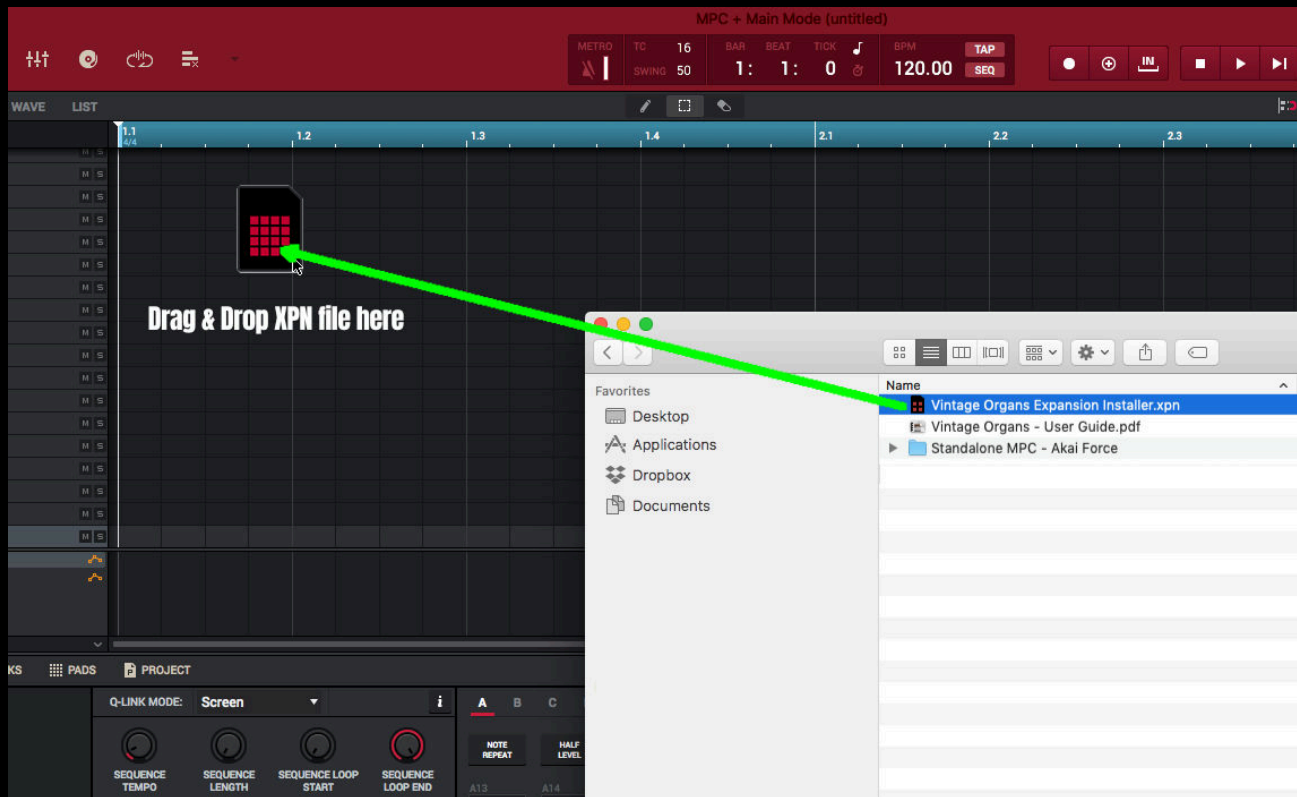


Single tap an instrument program to hear a preview (requires 'AUDITION >AUTO'). To load the instrument to the current track, either double tap the XPM file or single tap and press **LOAD**.

# Install: MPC Software/MPC Beats App

*Note: View the most up-to-date MPC Software expansion install instructions here:*  
<https://mpc-samples.com/article/install-mpc-software-expansions-guide>

Locate the '**Vintage Organs Expansion Installer.XPN**' file and drag & drop it directly into the MPC Software/MPC Beats UI from your computer's File Explorer/Finder:



*Please note that an XPN file **cannot** be installed by double clicking from your computer's file explorer.*

After dragging the XPN into the software UI you will see the following:



Select **'Import'** and once installed, open the **Expansion Browser** ('X' on your keyboard) and click on the **'MPC 2600'** thumbnail to view:



Vintage Organs  
Pad Pimps

P A D P I M P S P R E S E N T S



# VINTAGE ORGANS

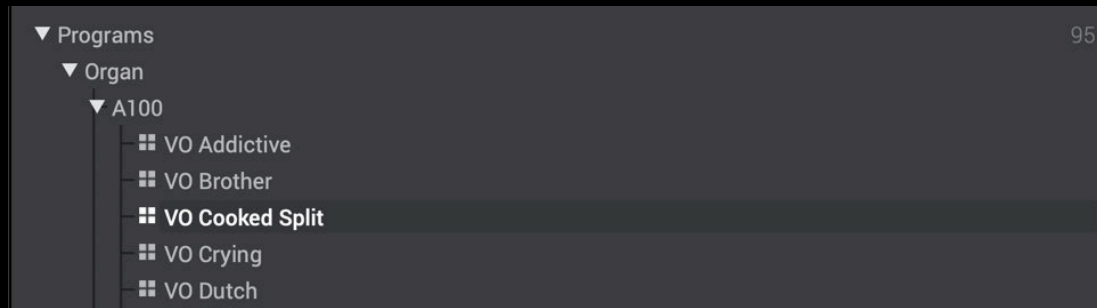
MULTISAMPLED TONEWHEEL & COMBO ORGANS FOR MPCs & AKAI FORCE



- ▶ Programs
- ▶ Samples

95  
2404

Expand the '**Programs**' group to reveal all the instruments, all organised into sub-categories based on the instrument type:



Single click any instrument to hear its program preview - this requires 'Autoplay' enabled:



Double click a program to load it to the current sequencer track. Alternatively, drag the program directly into your project. All instruments are '**keygroup**' programs and must be assigned to a '**KEYGROUP**' type track in your sequencer:

TRACK

1 Track 01

Input Port All Ports

Input Ch All

Monitor Auto

Key Range C-2 - G8

PROGRAM

Organ-A10.ooked Split

# Playing the Instruments with the Pads

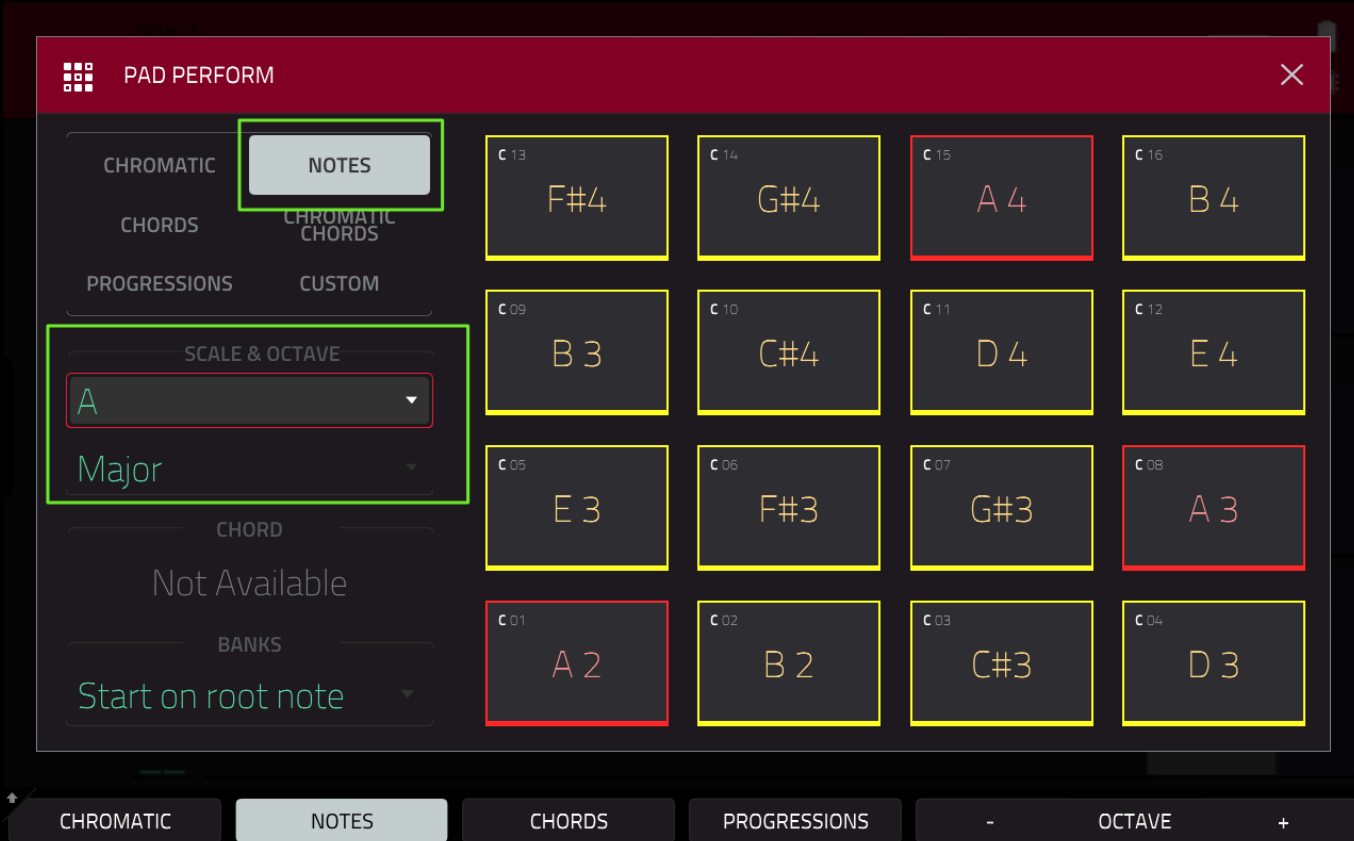
**Pad Perform Mode** ('Notes Mode' in the Akai Force) configures your pads to only play back notes from specified scales, or even trigger an entire chord from each individual pad.

*Please Note: Combo organ instruments cover the note range C0 to C6, while tone wheel organs cover the range C1 to C6 (in PAD PERFORM 'custom' mode, the note range is indicated by which pads are lit).*

With your instrument assigned to a track, in the MPC go to **Pad Perform Mode** by hitting the **PAD PERFORM** icon on the 'PROGRAM' row in MAIN. Alternatively, press **SHIFT & 16 LEVEL**. The following assumes to you running at least MPC 2.11.

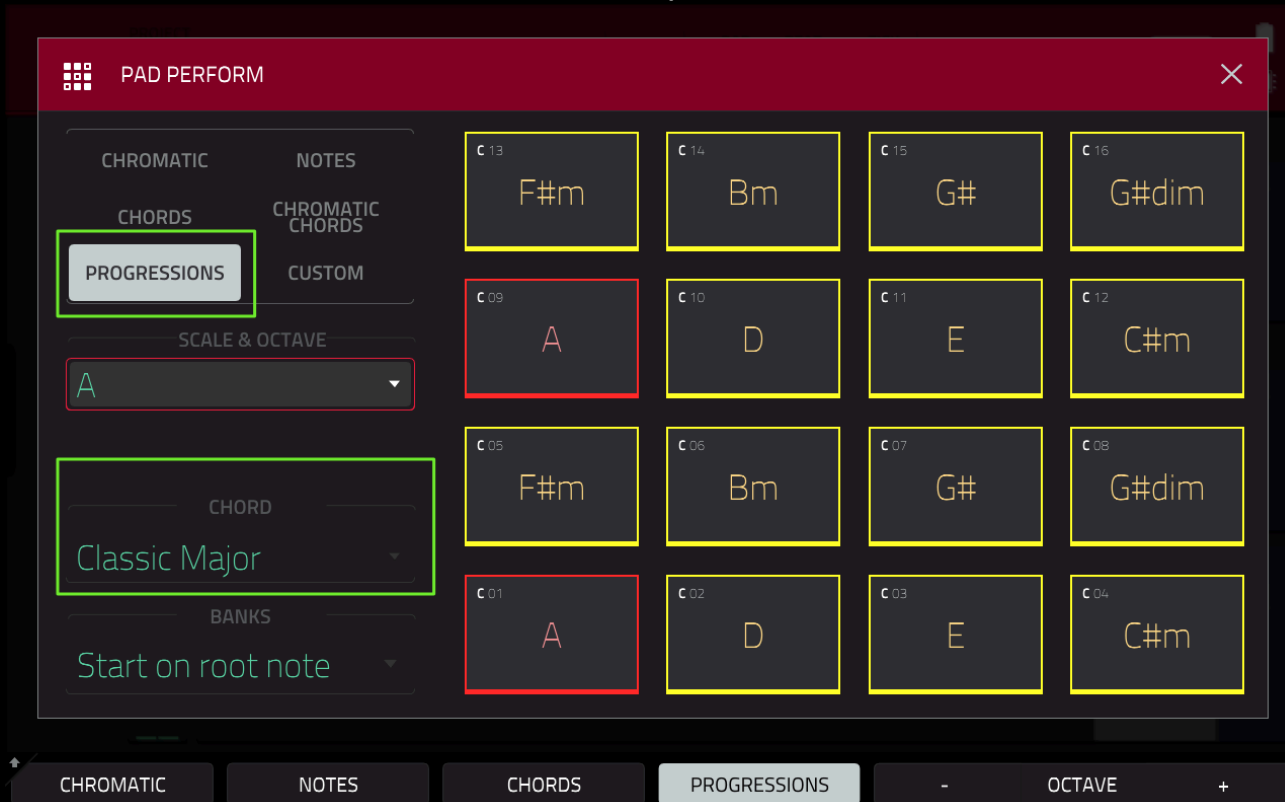
The screenshot shows a music software interface with a dark theme. At the top, a red header bar contains a home icon, the text 'PROJECT untitled', and various settings: 'BAR 1:', 'BEAT 1:', 'TICK 0', 'TC 1/16', 'METRO' (disabled), and a MIDI icon. Below the header, a vertical sidebar on the left contains icons for home, eye, grid, grid with lines, list, signal strength, and XY. The main area is divided into three sections: 'SEQUENCE', 'TRACK', and 'KEYGROUP PROGRAM'. The 'SEQUENCE' section shows '1 Sequence 01' with a red border, 'BPM 120.00', 'BARS 2', 'START / END 1 2', and 'TRANPOSE Off'. The 'TRACK' section shows '1 (unused)' with a red border, 'LENGTH Seq', 'TRANPOSE Off', and 'VELOCITY 100%'. The 'KEYGROUP PROGRAM' section shows 'Organ-Combo F-VO Banded' with a green border. A green arrow points to a 'PAD PERFORM' button in the 'KEYGROUP PROGRAM' section. At the bottom, a control bar includes 'MIDI', 'AUDIO', 'TRACK', 'MUTE', and 'SOLO' buttons.

To create melodic leads and riffs, select **NOTES** & under '**SCALE & OCTAVE**' select your preferred scale, octave & musical key.



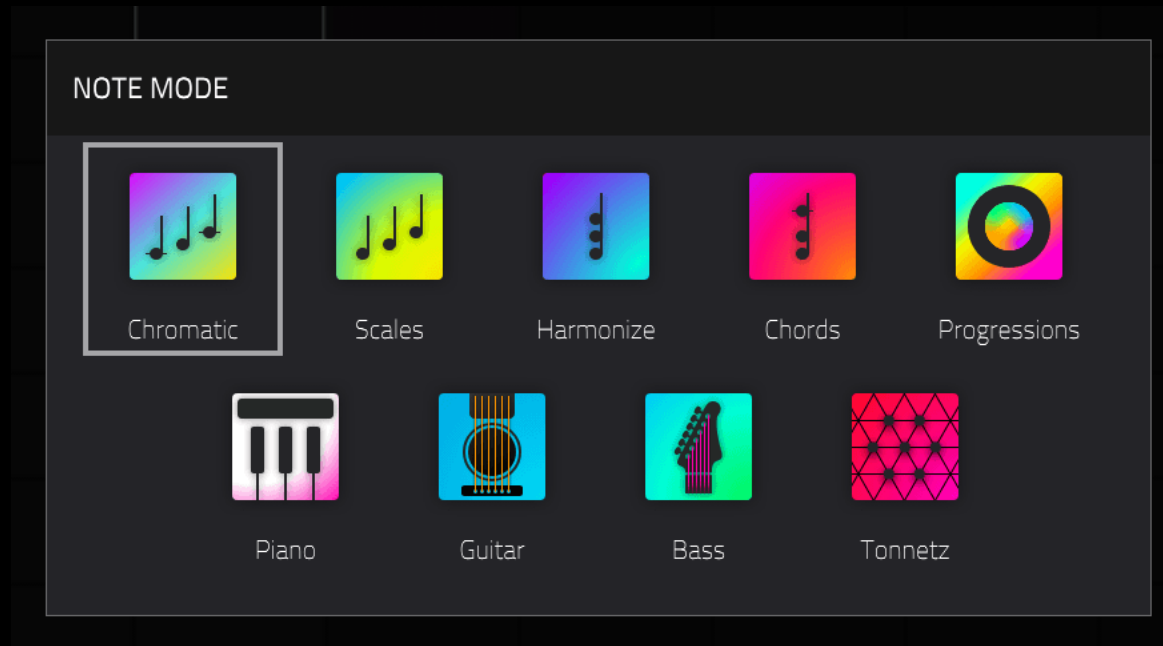
The 16 pads on your MPC will now only play back the notes in this specific scale. Red pads indicate the 'root' note in the scale. We suggest you select bank A and use the OCTAVE +/- buttons to select a suitable octave range.

You can also play a complete chord on a single pad by selecting the **CHORDS**, **CHROMATIC CHORDS** or **PROGRESSIONS** options.

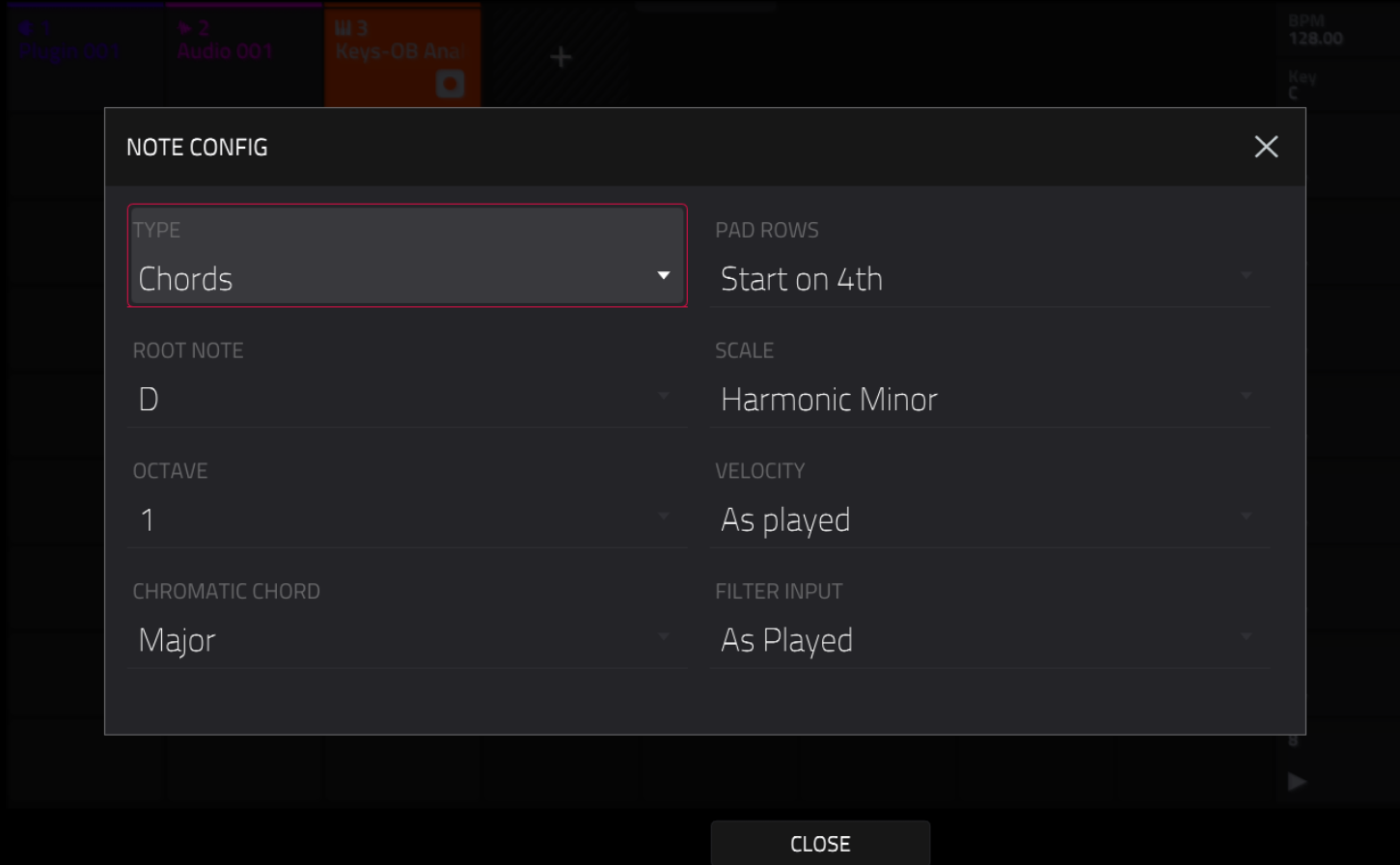


**Important:** If you wish to return the pads to a 'chromatic' layout, select CHROMATIC mode, or CUSTOM. In CHROMATIC mode the pads will light up to show the currently selected scale, but you'll still be able to play the (unlit) notes outside of the scale.

In the Force, hit the **NOTE** hardware button to enter **NOTES** mode. Now press and hold the **NOTE** button to select the preferred note mode:



Press **SHIFT** and **NOTE** to launch the full **NOTE CONFIG** screen:



You can now play the instrument across the Force's 64 pads.

# Playing the Instruments with a MIDI Keyboard

Instruments can be also played using an attached MIDI keyboard. For standalone MPCs/Force you can connect a USB keyboard directly to your MPC's USB port and you should immediately be able to play the instrument assigned to the current track, no additional configuration needed.



If your MPC has Bluetooth support you can configure a Bluetooth controller via **Preferences > Bluetooth**. Alternatively connect a keyboard via the 5 pin MIDI ports.

If you are using the MPC Software/MPC Beats you can connect your controller to your computer directly via USB or use a 5 pin MIDI cable connected to a suitable USB-MIDI interface. If you have an MPC controller such as the MPC Touch, MPC Renaissance or MPC Studio already connected to your computer, you use the MPC itself as the MIDI interface.

For more information about connecting MIDI controllers to the MPC, check out my dedicated article:

<https://www.mpc-tutor.com/mpc-midi-tutorial-connecting-midi-controllers/>

# Q-LINK and Mod Wheel Control

Most instruments feature pre-configured Q-LINK control for reverb and 'autopan' settings. To activate Q-Link control for these parameters, hold down the **Q-LINK** button and press the **PROGRAM** tab:



The top Q-LINK dial (Q-LINK 16) controls the amount (mix) of 'autopan' added to the dry signal. Autopan creates a similar effect to a Leslie speaker. The Q-LINK dial under this (**Q-LINK 12**) controls the **rate** of the autopan (i.e. how fast it pans back and forth from left to right).

The next **Q-LINK (8)** controls the **Dry/Wet** mix for the **reverb**, while the bottom Q-LINK dial (**Q-LINK 4**) controls the **reverb decay time**.

If you have keyboard controller with a modulation wheel, or your MPC has a touchstrip that can function as modulation wheel control (e.g. MPC Studio Mk 2) you can use this to control the amount of pitch '**vibrato**' applied to the organ sound.

# Further Resources

If you need help learning how to use your MPC, check out MPC-Tutor's range of **MPC tutorial** books and courses at:

<https://www.mpc-samples.com/section.php/8/0/mpc-tutorials-courses/>

**Vintage Organs** is part of our growing range of MPC and Force expansions – check out our entire range here, with loads of acoustic keys, pianos, drum kits, bass, synths & much, much more:

<https://www.mpc-samples.com/section.php/78/0/mpc-expansions/>

# Copyright & License

**'Vintage Organs 1.5 Edition'** published by MPC-Samples.com, 2023.

All recordings, MPC program files & audio previews by **Pad Pimps**. Copyright © 2018-2023. All rights reserved. User guide by MPC-Samples.com. Copyright © 2023. All rights reserved.

## License

MPC-Samples.com ('The Publisher') grants You a royalty free, non-exclusive, non-transferable, non-sublicenseable, worldwide License to use Vintage Organs 1.5 Edition ('The Product') to create Musical Compositions for You and for third party projects, such as songs, albums, soundtracks, video and computer games as well as for use in public performances and media presentations. All other rights in and to The Product, including, without limitation, all copyright and other intellectual property rights relating to The Product are fully retained by the Publisher.

Under no circumstances can The Product, or modified versions of The Product, be re-distributed, re-sold, sub-licensed, or used to form any part of a commercial sample library. THE SOUNDS ARE PROVIDED "AS IS" WITHOUT REPRESENTATION, WARRANTY OR CONDITION OF ANY KIND, EITHER EXPRESS OR IMPLIED, INCLUDING, BUT NOT LIMITED TO THE IMPLIED REPRESENTATIONS, WARRANTIES OR CONDITIONS OF MERCHANTABILITY, OR FITNESS FOR A PARTICULAR PURPOSE. THE PUBLISHER DOES NOT REPRESENT OR WARRANT THAT THE SOUNDS WILL MEET YOUR REQUIREMENTS. THE ENTIRE RISK AS TO THE QUALITY, PERFORMANCE AND USE OF THE SOUNDS IS WITH YOU.

This License may be terminated without notice by The Publisher if at any time You fail to comply with any of its terms. Upon termination, You must immediately cease using The Sounds, delete all copies and archives of The Sounds and if requested, confirm to the Publisher in writing that You have complied with these requirements.

If You are unsure if this License covers Your intended use, please contact the Publisher for clarification; [licensing@mpc-samples.com](mailto:licensing@mpc-samples.com).

MPC-Samples.com is a trading name of Beat Box Digital LTD, a company registered in England & Wales, no. 06810062