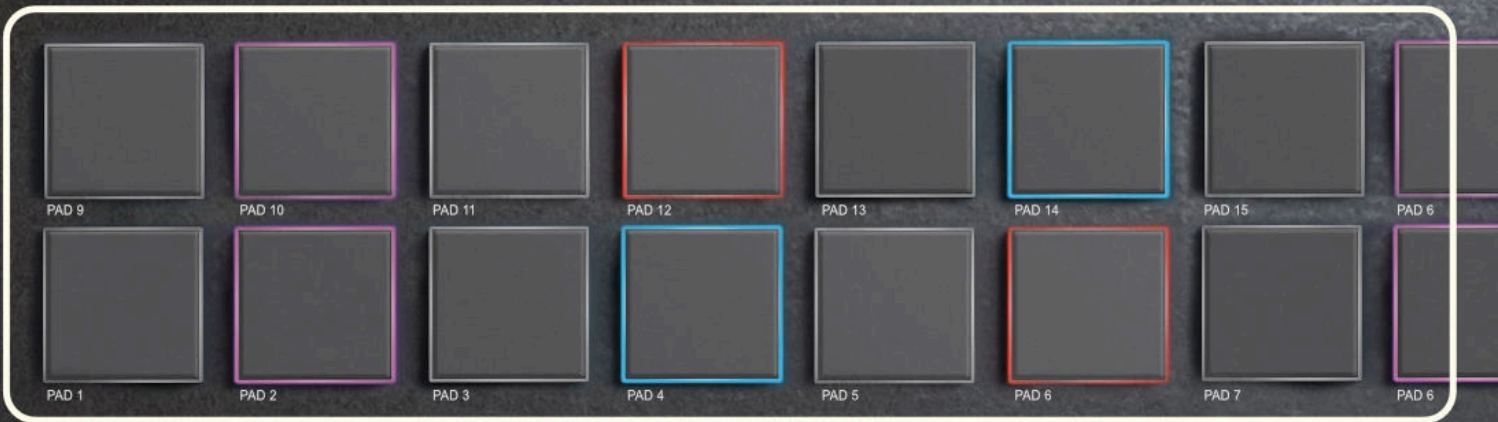
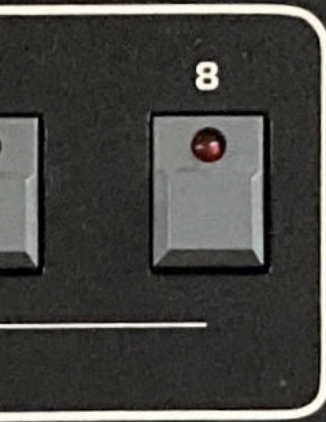


10  
RELEASE

0 10 0 10 0 10 0 10  
ATTACK DECAY SUSTAIN RELEASE



 PADPIMPS PRESENTS

# MPC~prophet

INSTALLATION & USER GUIDE



# Contents

<b>MPC-Prophet: Introduction</b>	<b>3</b>
<b>What's Inside?</b>	<b>4</b>
<b>Install: Standalone MPC &amp; Akai Force</b>	<b>6</b>
<b>Install: MPC Software/MPC Beats App</b>	<b>12</b>
<b>Playing the Instruments with MPC Pads</b>	<b>18</b>
<b>Playing the Instruments with a MIDI Keyboard</b>	<b>22</b>
<b>Portamento</b>	<b>24</b>
<b>Further Resources</b>	<b>27</b>
<b>Copyright &amp; License</b>	<b>28</b>

# MPC-Prophet: Introduction

- **MPC-Prophet** is our tribute to the legendary 80s analog synth, the Prophet 5. Inside are 102 custom multisampled synth patches combined with the MPCs filters, LFO, FX and envelopes to produce an epic collection of powerful leads, evolving pads & strings, punchy bass and lush keys, all optimised for super-fast loading & minimal CPU.
- All programs are fully categorized and tagged for easy browser searching/filtering and program previews provided for every single instrument so it's always easy to find the exact sound you need.
- This expansion is compatible with any MPC running **MPC 2.10** (or greater), the **Akai Force**, the **MPC Software (2.10+)** and the **MPC Beats App**.

# What's Inside?

MPC-Prophet contains **102 custom instruments** for the MPC, made from **2192 samples**. Each instrument is pre-mapped chromatically for you so you can just load it and play – there's no need for any configuration or tweaking, simply listen to the instrument previews in the browser, load your chosen instruments into your project and start playing chords, riffs and melodies on your pads or an attached keyboard.

MPC-Prophet is suitable for any style of electronic music and contains the following instrument categories:

- 11 Keys & Organs
- 19 Basses & Subs
- 26 Lead & Brass
- 24 Pads & Strings
- 22 Plucks & Synth instruments

These instruments are MPC 'keygroup' programs which utilise **multisampling** and **subtractive synthesis** techniques making extensive use of the MPC's own internal

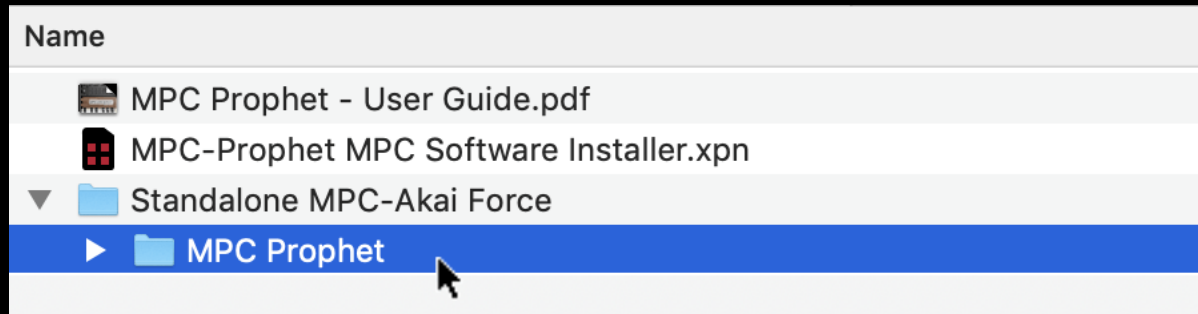
filters, envelopes, LFO & FX, all combined with thousands of perfectly sustain-looped samples.

All instruments are 100% compatible with PAD PERFORM ('Notes Mode') and the arpeggiator, while keyboard controllers can also utilise pitch bend and mod wheel control of LFO for many of the instrument patches.

All instruments are also fully editable via PROGRAM EDIT so, if you wish, you can tweak the FX, filters, envelopes, portamento and LFOs as per your specific requirements.

# Install: Standalone MPC & Akai Force

After downloading the expansion, extract the zip file contents to your computer. Enter the '**Standalone MPC-Akai Force**' folder and inside you'll see a sub folder '**MPC-Prophet**' – this is the folder we're going to transfer to your MPC/Force.



Expansions must be installed to either an **SD card**, a **USB drive** or, if you have one, an internal **SATA disk**.

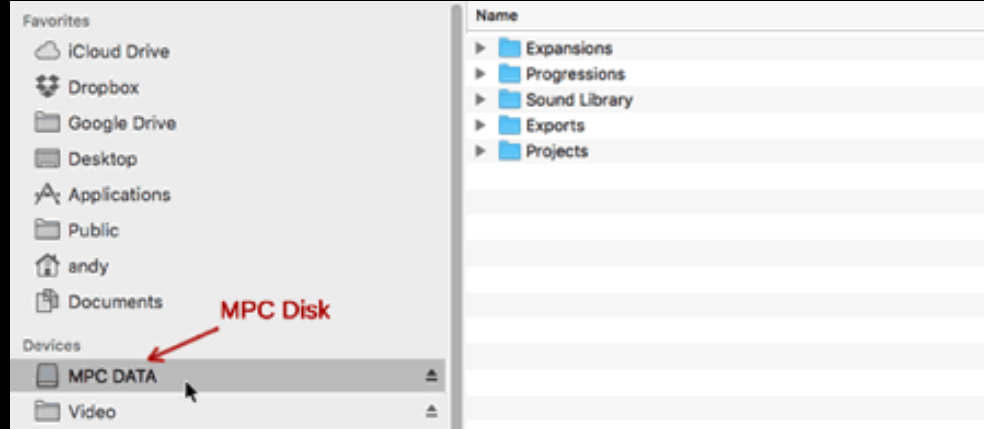
The first step is to mount this 'MPC disk' on your computer. If you use an SD card or USB disk, you can just eject the disk from your MPC/Force and physically insert it into your computer's SD card reader or USB port.

Alternatively, connect your MPC or Force via USB to your computer and go to **MENU** and hit the '**MPC chip**' icon at the top of the screen (this is the '**Laptop**' icon in the Force).

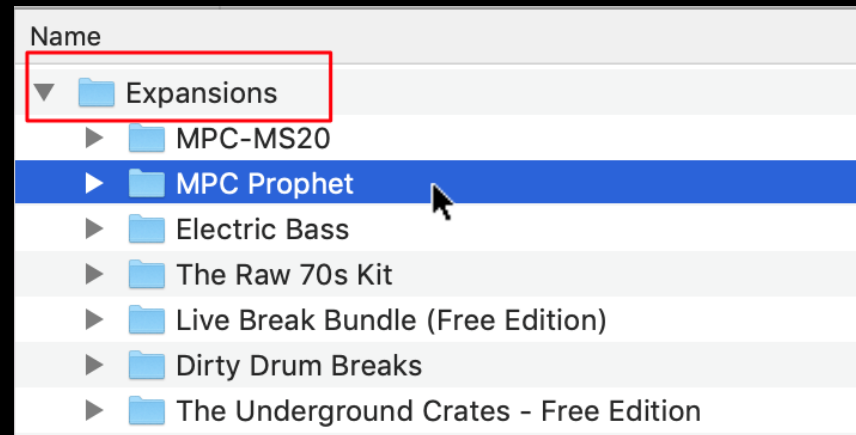


Now select **CONTROLLER MODE** ('**COMPUTER MODE**' in the Force).

Whichever connection method you choose, your MPC disk should now appear as a removable drive in your computer's file manager (e.g. Finder or File Explorer). Click on the drive to open its file system:



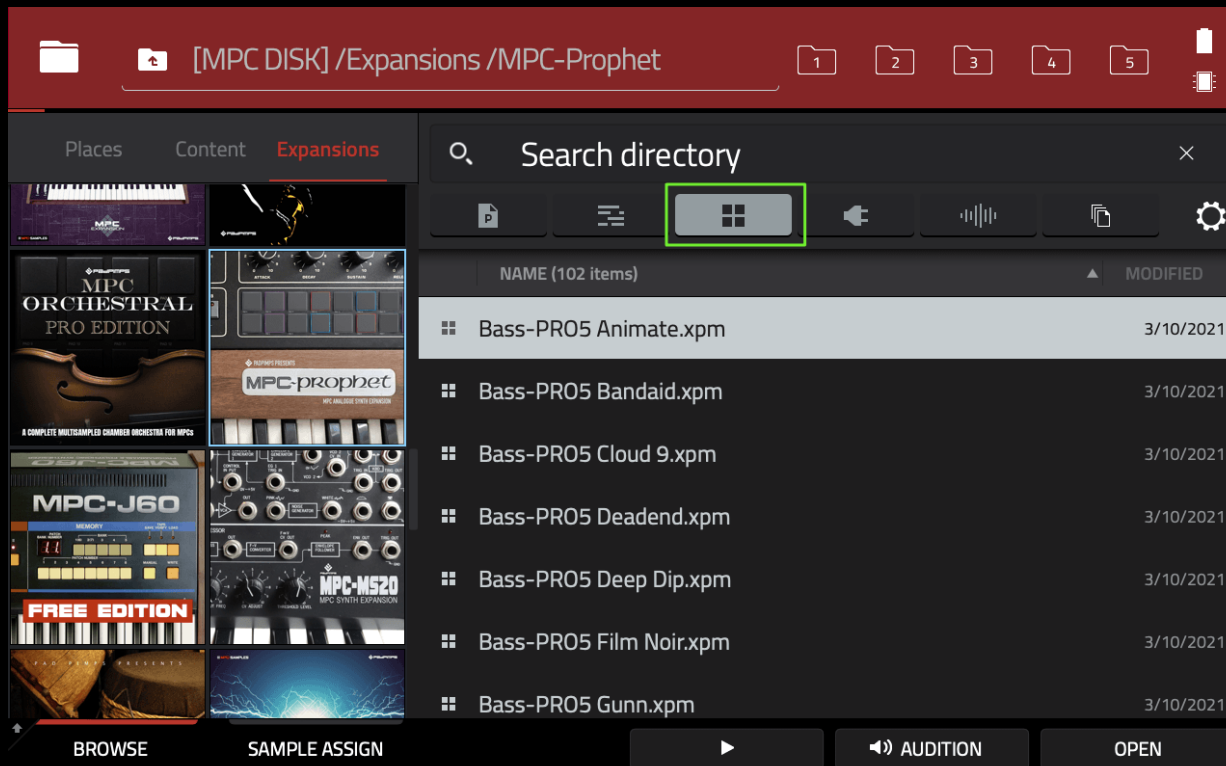
If it doesn't already exist, create a folder called 'Expansions' in the root of your disk. Now copy the 'MPC- Prophet' standalone expansion folder *inside* this 'Expansions' folder.



All done! If you had physically transferred the MPC disk to your computer you should now eject the disk from your computer and put the disk back in your MPC.

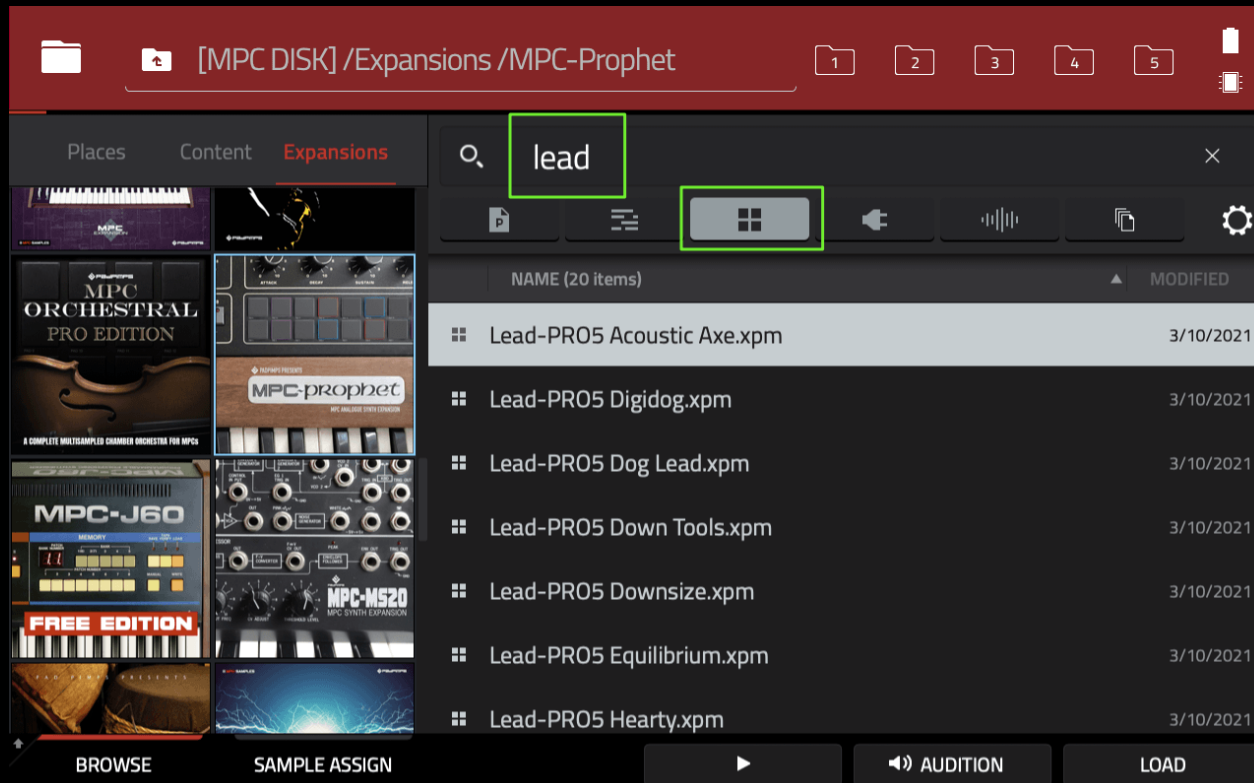
Alternatively, if you used USB transfer then go back to **MENU** and select the computer icon to return to standalone mode - *don't forget to eject/unmount the MPC from your computer first, this avoids any potential data loss.*

In your MPC, go to **MENU > BROWSER > Expansions** and tap on the '**MPC- Prophet**' thumbnail to view the expansion. Select the **PROGRAM** filter to view all the available instruments:



Single tap/click the program to hear a preview (requires 'AUDITION > AUTO').  
Double tap to load the instrument directly into the currently selected sequence (or single tap and hit the **LOAD** button).

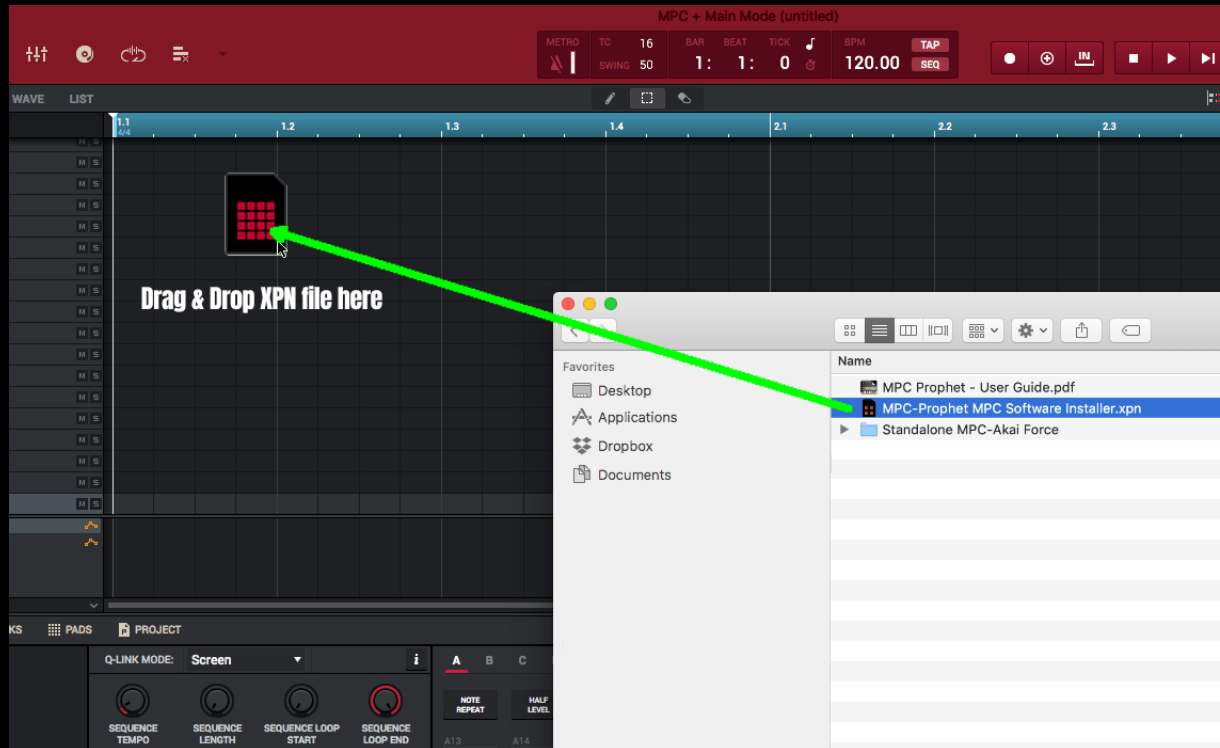
Use the 'Search directory' option to filter the results by 'tag'; for example, enter 'lead' to display only 'lead' instruments:



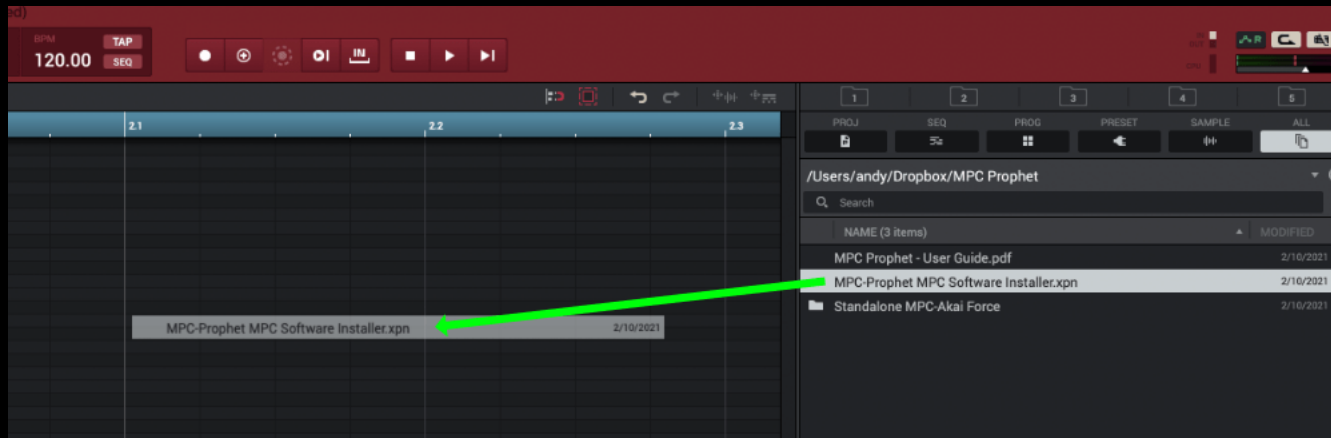
The instruments are standard MPC 'keygroup' programs which must be assigned to a 'KEYGROUP' type track.

# Install: MPC Software/MPC Beats App

Locate the 'MPC-Prophet MPC Software Installer.XPN' file and drag & drop it directly into the MPC Software/MPC Beats UI from your computer's File Explorer/Finder:



Alternatively, you can drag the XPN from the MPC 2.x 'File Browser' (shortcut 'F'):



*Please note that an XPN file **cannot** be installed by double clicking from your computer's file explorer.*

After dragging the XPN into the software UI you will see the following:



Select **'Import'** and once installed, open the **Expansion Browser** ('X' on your keyboard) and click on the **'MPC- Prophet'** thumbnail to view:

MPC Prophet  
Pad Pimps

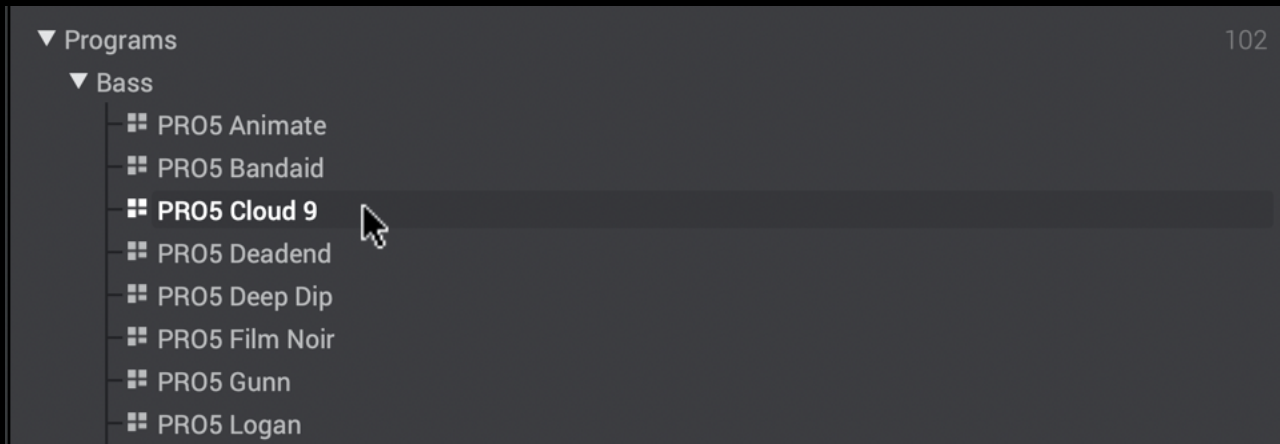
ATTACK DECAY SUSTAIN RELEASE

PAD 9 PAD 10 PAD 11 PAD 12 PAD 13 PAD 14 PAD 15  
PAD 1 PAD 2 PAD 3 PAD 4 PAD 5 PAD 6 PAD 7

PADPIMPS PRESENTS  
**MPC~prophet**  
MPC ANALOGUE SYNTH EXPANSION

▶ Programs 102  
▶ Samples 2192

Expand the 'Programs' group to reveal all the instruments, all organised into sub-categories based on the instrument type :



Single click any instrument to hear its program preview - this requires 'Autoplay' enabled:

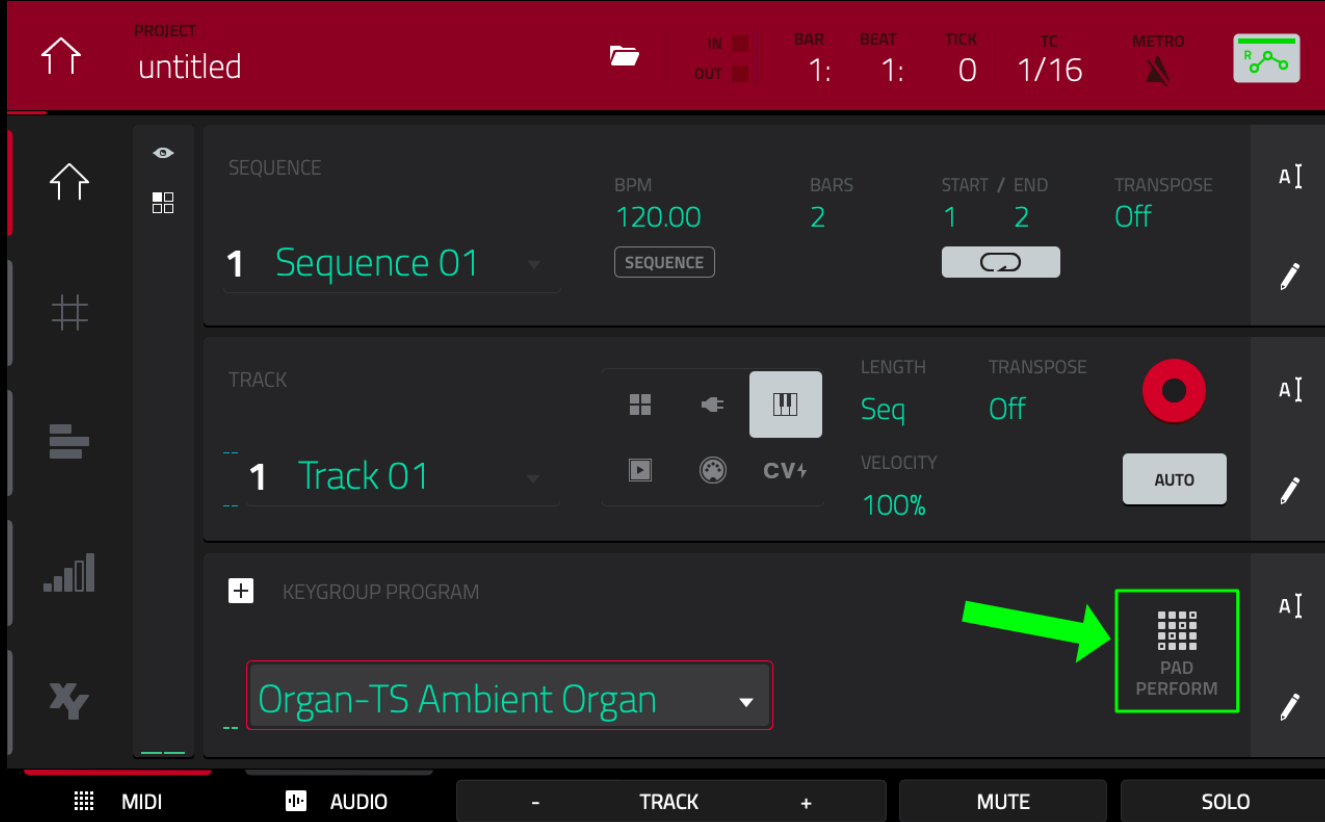


Double click a program to load it to the current track. Alternatively, drag the program directly into your project. All instruments are 'keygroup' programs and must be assigned to a '**KEYGROUP**' type track in your sequencer.

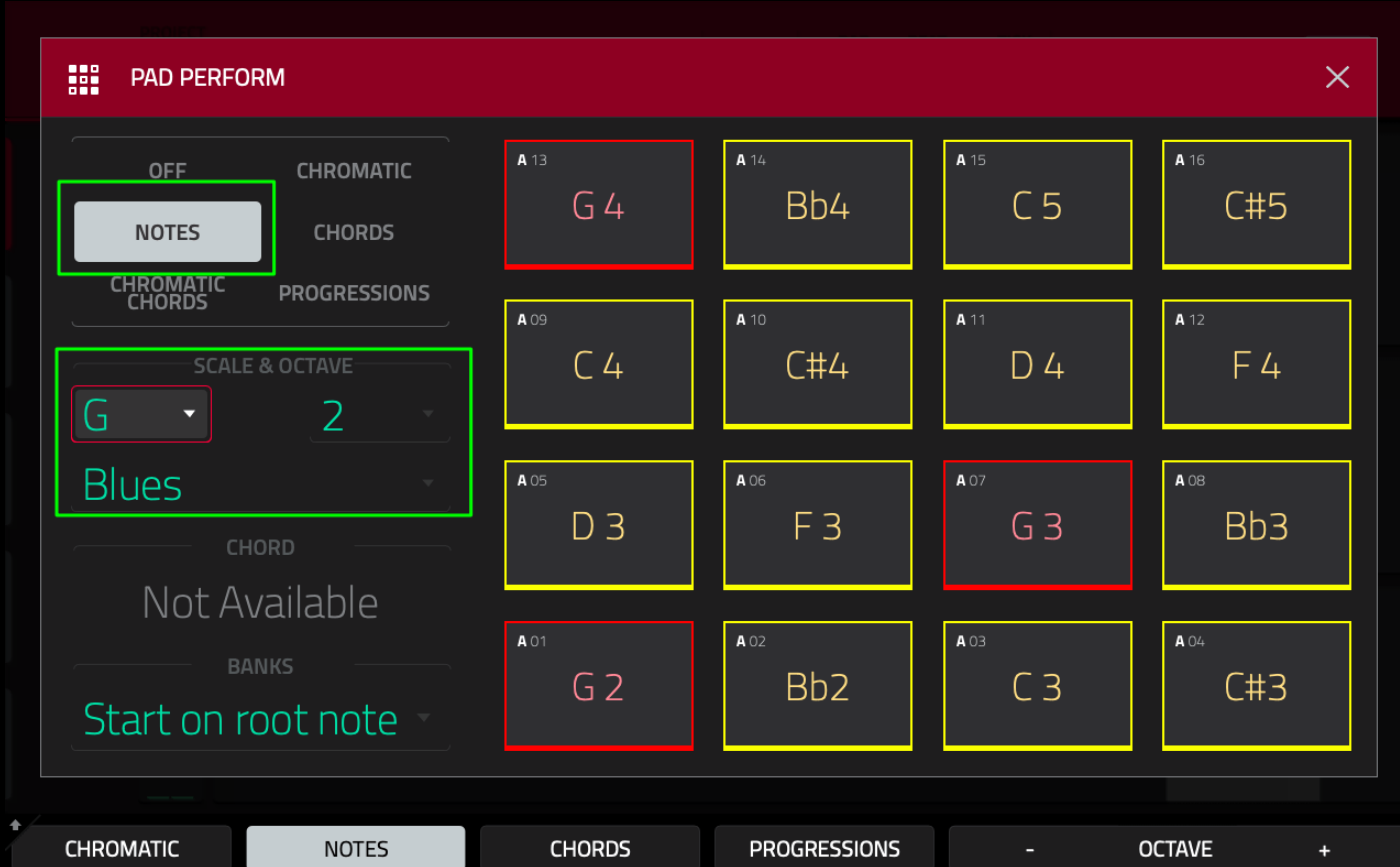
# Playing the Instruments with MPC Pads

The pads in a keygroup program cover the MIDI notes 'C-2 to G8' starting on pad A01. However, the notes in bank A and B tend to be too low to be usable (unless you need a really low rumble!), so BANK C will often be the 'playable' starting point for many programs.

All instruments are fully compatible with **Pad Perform Mode** ('Notes Mode' in the Akai Force) which can configure your pads to only play back notes from specified scales, or can be used to trigger entire chords from each pad. With your instrument assigned to a track, go to **Pad Perform Mode** by hitting the **PAD PERFORM** icon on the 'PROGRAM' row in MAIN. Alternatively, press **SHIFT & 16 LEVEL**.



To create melodic leads and riffs, select **NOTES** & under '**SCALE & OCTAVE**' select your preferred scale, octave & musical key.



The 16 pads on your MPC will now only play back the notes in this specific scale. Red pads indicate the 'root' note in the scale. You can also play a complete chord on a single pad by selecting the **CHORDS** or **PROGRESSIONS** options.



**Important:** When you have finished with PAD PERFORM mode, remember to turn it off otherwise your pads will remain locked to the selected scale pattern.

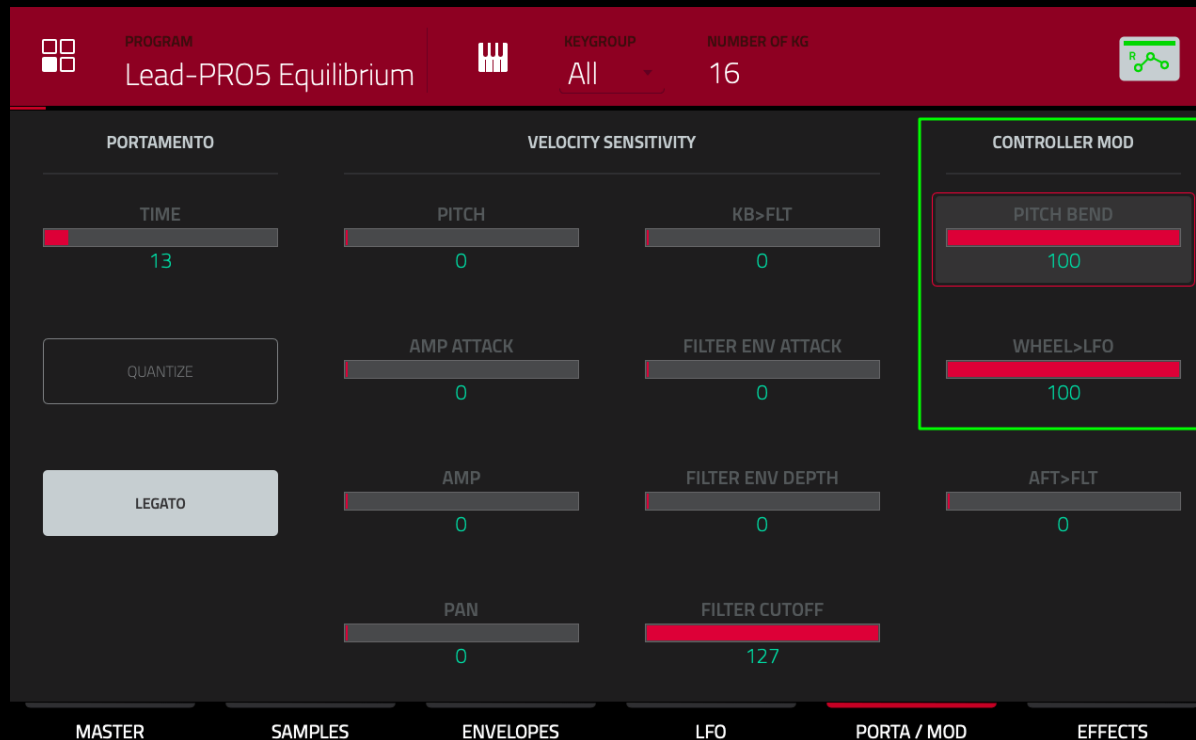
Please note: many of the program utilise velocity sensitive filters, so we recommend that **FULL LEVEL** is set to 'off'.

# Playing the Instruments with a MIDI Keyboard

Instruments can be also played using an attached MIDI keyboard. For standalone MPCs/Force you can connect a USB keyboard via your MPC's USB port, a Bluetooth keyboard via **Preferences > Bluetooth**, or connect a keyboard via the 5 pin MIDI ports.

For MPC controllers such as the **MPC Renaissance/Studio/Touch** you can connect the keyboard via a physical MIDI cable to the MPC MIDI 'in' port (a minijack-to-5 pin adapter is required for the Touch/Studio). Alternatively, you can connect a USB MIDI keyboard to your computer and configure it as the active MIDI device.

You will find that many lead and bass instruments have been pre-configured to read pitch bend information from a keyboard's pitch wheel. You can change the pitch bend to any maximum value you wish in **PROGRAM EDIT > PORTA / MOD**:

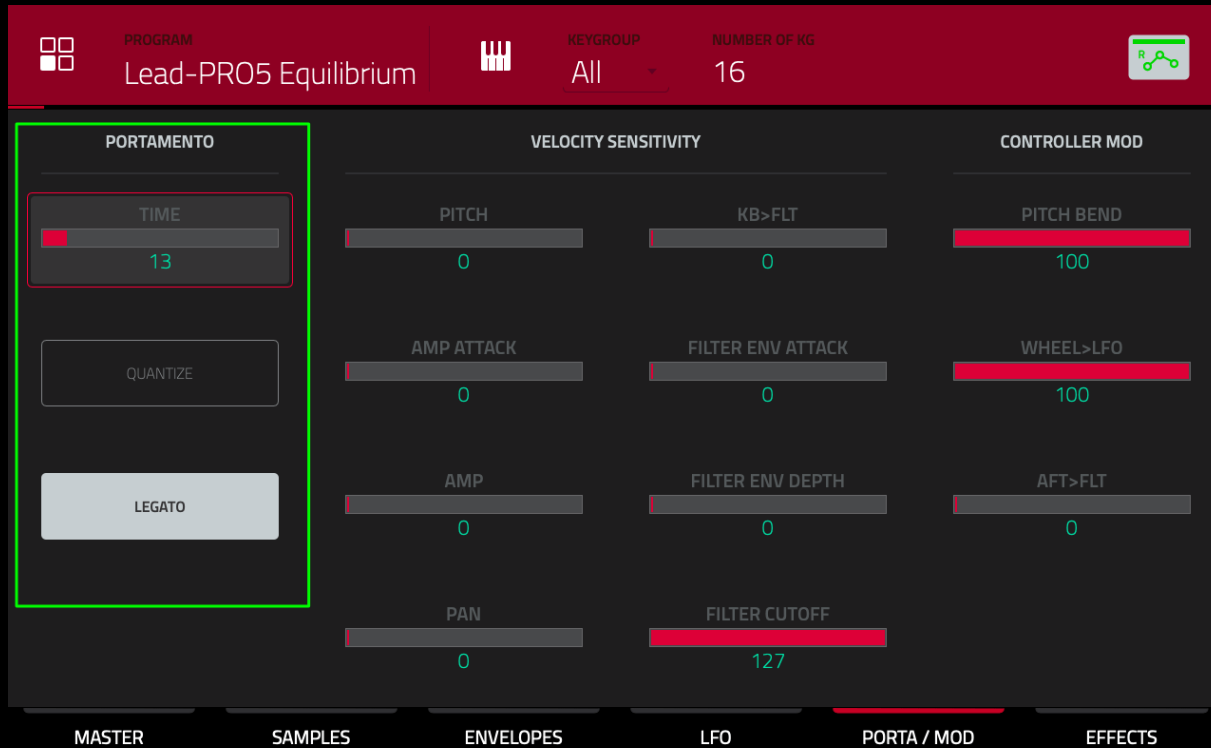


Typically we've preset this to bend a maximum of either 12 semitones (which correlates to a **PITCH BEND** setting of **100**) or 2 semitones (PITCH BEND of 16).

We have also configured modulation wheel control of the LFO on many instruments (mostly pads and strings). A **WHEEL > LFO** setting of **100** gives full control of LFO to the mod wheel. A setting of 0 disables mod wheel control.

# Portamento

Some programs have portamento applied to the keygroups to produce a 'glide' between notes. In MPC 2.10, this can be adjusted in **PROGRAM EDIT > PORTA/MOD**:



**PORTAMENTO TIME** controls how quickly each note glides into the next note.

**PORTAMENTO LEGATO** controls when/if the glide is triggered. If LEGATO is OFF, glide occurs between all notes at all times. With LEGATO ON, glide only occurs when notes overlap each other.

For smooth glides, set **PORTAMENTO QUANTIZE** as OFF. Set to ON if you want the glide to be 'stepped' in line with the current timing correct (T.C.) settings (this is more noticeable when PORTAMENTO TIME is set to a high value).

To adjust portamento in the Akai Force or MPC 2.9 you can use the Q-LINKS. In the MPC, hold down the **Q-LINK** button and select **PROGRAM** mode. Q1 will set the portamento time, while Q5 will control legato and Q9 controls portamento quantize.



In the Force, hold down the **KNOBS** button and select **TRACK**. Now, knob 1 controls portamento time, knob 5 controls legato, and knob 9 controls portamento quantize.

# Further Resources

If you need help learning how to use your MPC, check out MPC-Tutor's range of **MPC tutorial** books and courses at:

<https://www.mpc-samples.com/section.php/8/0/mpc-tutorials-courses/>

**MPC-Prophet** is part of our growing range of MPC expansions – check out our entire range here, with loads of acoustic keys, pianos, drum kits, bass, synths & much, much more:

<https://www.mpc-samples.com/section.php/78/0/mpc-expansions/>

# Copyright & License

'MPC- Prophet', published by MPC-Samples.com, 2021.

All recordings, MPC program files & audio previews by **Pad Pimps**. Copyright © 2021. All rights reserved. User guide by MPC-Samples.com. Copyright © 2021. All rights reserved.

## License

MPC-Samples.com ('The Publisher') grants You a royalty free, non-exclusive, non-transferable, non-sublicenseable, worldwide License to use MPC- Prophet ('The Product') to create Musical Compositions for You and for third party projects, such as songs, albums, soundtracks, video and computer games as well as for use in public performances and media presentations. All other rights in and to The Product, including, without limitation, all copyright and other intellectual property rights relating to The Product are fully retained by the Publisher. Under no circumstances can The Product, or modified versions of The Product, be re-distributed, re-sold, sub-licensed, or used to form any part of a commercial sample library. THE SOUNDS ARE PROVIDED "AS IS" WITHOUT REPRESENTATION,

WARRANTY OR CONDITION OF ANY KIND, EITHER EXPRESS OR IMPLIED, INCLUDING, BUT NOT LIMITED TO THE IMPLIED REPRESENTATIONS, WARRANTIES OR CONDITIONS OF MERCHANTABILITY, OR FITNESS FOR A PARTICULAR PURPOSE. THE PUBLISHER DOES NOT REPRESENT OR WARRANT THAT THE SOUNDS WILL MEET YOUR REQUIREMENTS. THE ENTIRE RISK AS TO THE QUALITY, PERFORMANCE AND USE OF THE SOUNDS IS WITH YOU.

This License may be terminated without notice by The Publisher if at any time You fail to comply with any of its terms. Upon termination, You must immediately cease using The Sounds, delete all copies and archives of The Sounds and if requested, confirm to the Publisher in writing that You have complied with these requirements.

If You are unsure if this License covers Your intended use, please contact the Publisher for clarification; [licensing@mpc-samples.com](mailto:licensing@mpc-samples.com).

MPC-Samples.com is a trading name of Beat Box Digital LTD, a company registered in England & Wales, no. 06810062