

ACOUSTIC & ELECTRIC INSTRUMENTS FOR MPC

MPC INSTRUMENT BUNDLE 5



Contents

Installation	3
<i>Compatibility</i>	3
Standalone MPC & Akai Force	4
MPC Software/MPC Beats	7
Playing the Instruments with MPC/Force Pads	10
Further Resources	16
Copyright & License	17

Installation

Thank you for purchasing the **MPC Instrument Bundle 5**. The full bundle consists of 9 individual expansions which must be installed using the step-by-step [installation guides](https://www.mpc-samples.com/support/expansions) on our web site: <https://www.mpc-samples.com/support/expansions>

Compatibility

The MPC Instrument Bundle is suitable for all modern standalone MPCs, Akai Force and MPC Software/MPC Beats:

Any modern standalone MPC running MPC 2.13+, MPC 3.5+

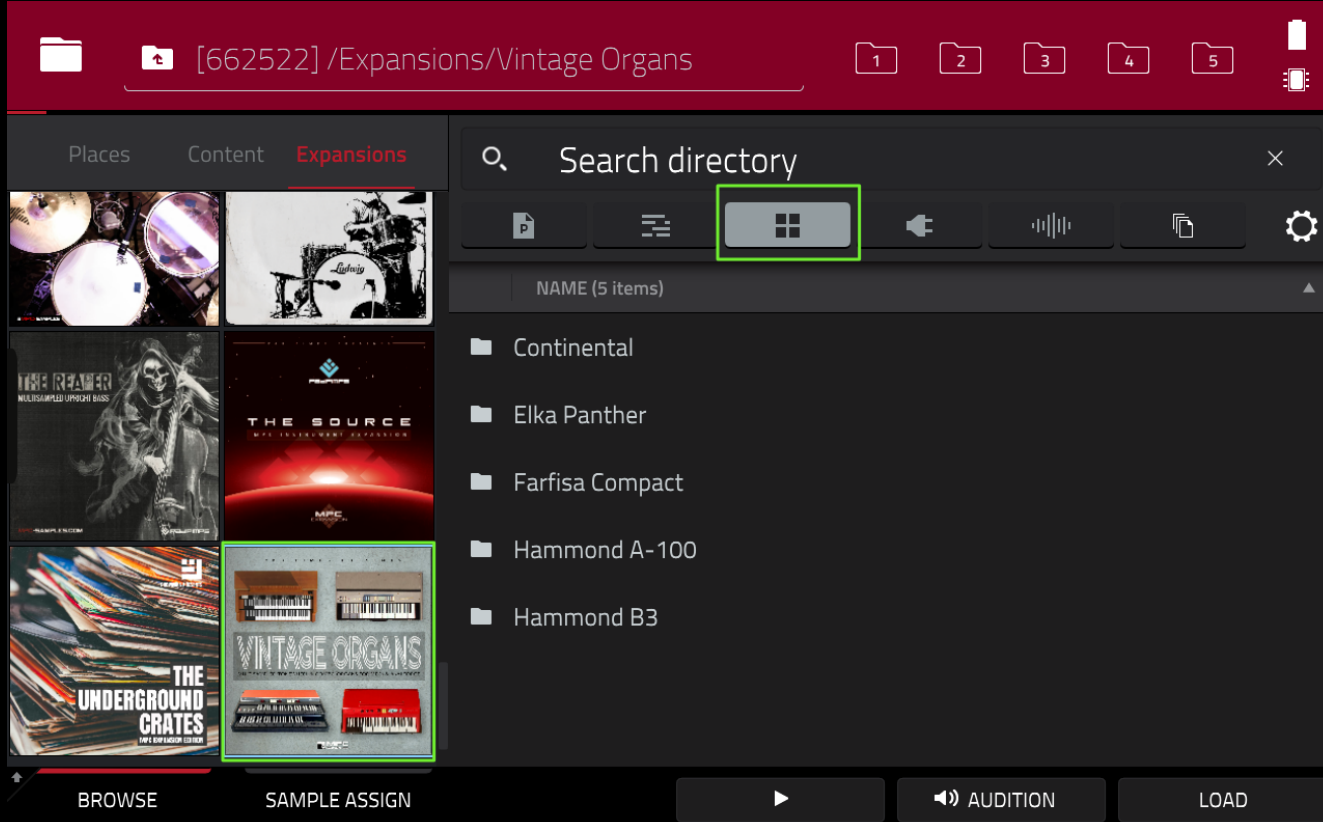
MPC Software 2.13+, 3.5+

Akai Force 3.3+, 3.5+

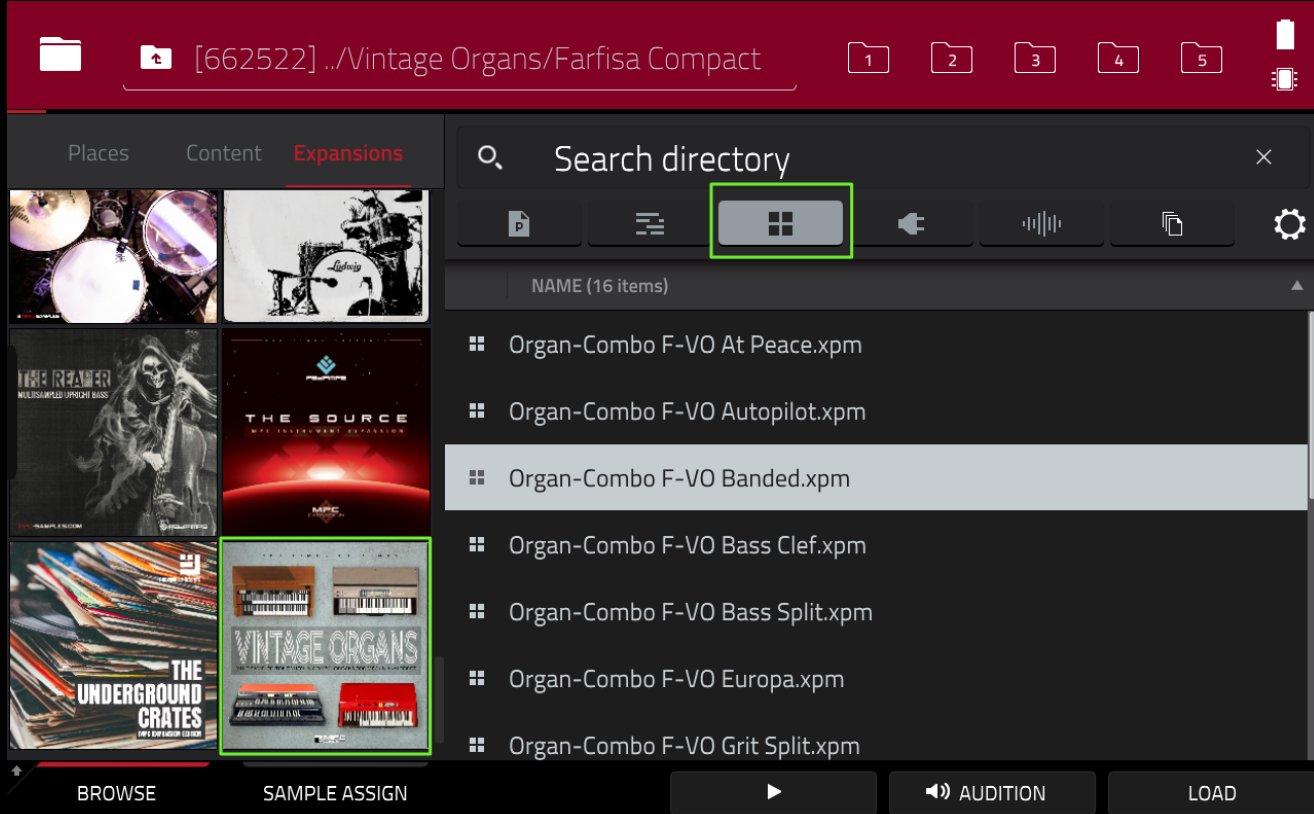
Standalone MPC & Akai Force

After installing all 9 expansions, go to 'MENU > BROWSER > Expansions' and tap the thumbnail for one of the examples, e.g. 'Vintage Organs'.

On the right side, select the **PROGRAM** filter to view the instrument groups:



Double tap to enter a folder to view the available instruments in this group:



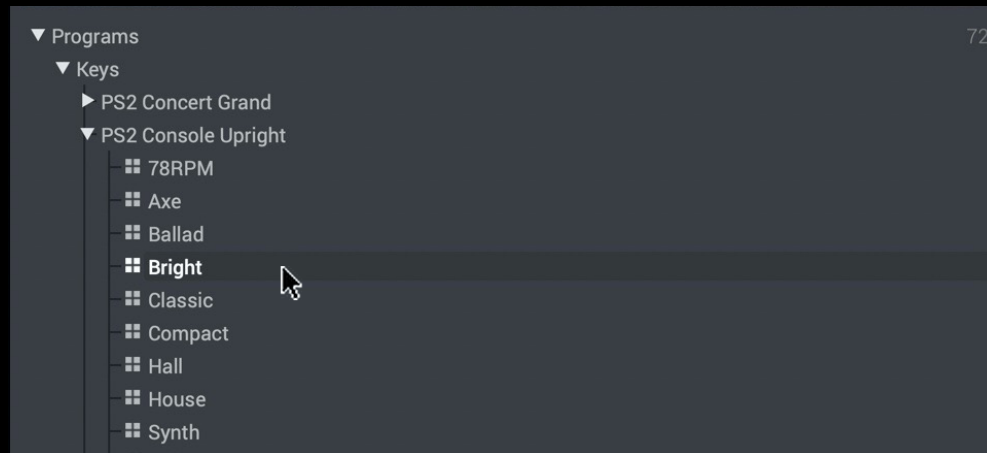
Single tap an instrument program to hear a preview (requires '**AUDITION >AUTO**'). To load the instrument to the current track, either double tap the XPM file or single tap and press **LOAD**

MPC Software/MPC Beats

After installing all 9 XPN files, go to your **Expansion Browser** ('X' on your keyboard) and click on the thumbnail for one of the expansions, e.g. **'Piano Suite'**:



Expand the 'Programs' group to reveal the different instruments:



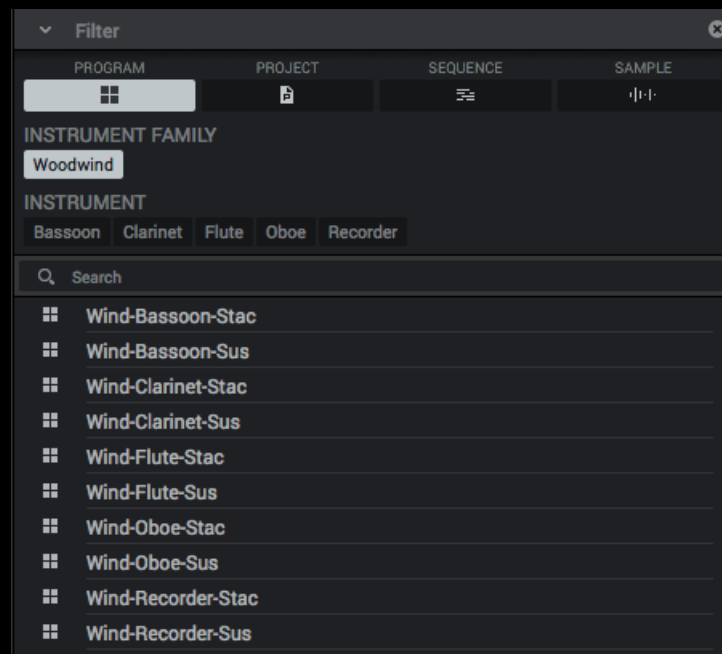
Single click to hear the program preview - this requires 'Autoplay' enabled:



Double click a program to load it to the current 'keygroup' type track. Alternatively, drag the program directly into your project.

You can also browse the expansions using Media Browser ('B' on your keyboard). Here, you can filter your display by **Instrument Family** and or **Instrument**.

In the example below, I've selected only **Woodwind** instruments:

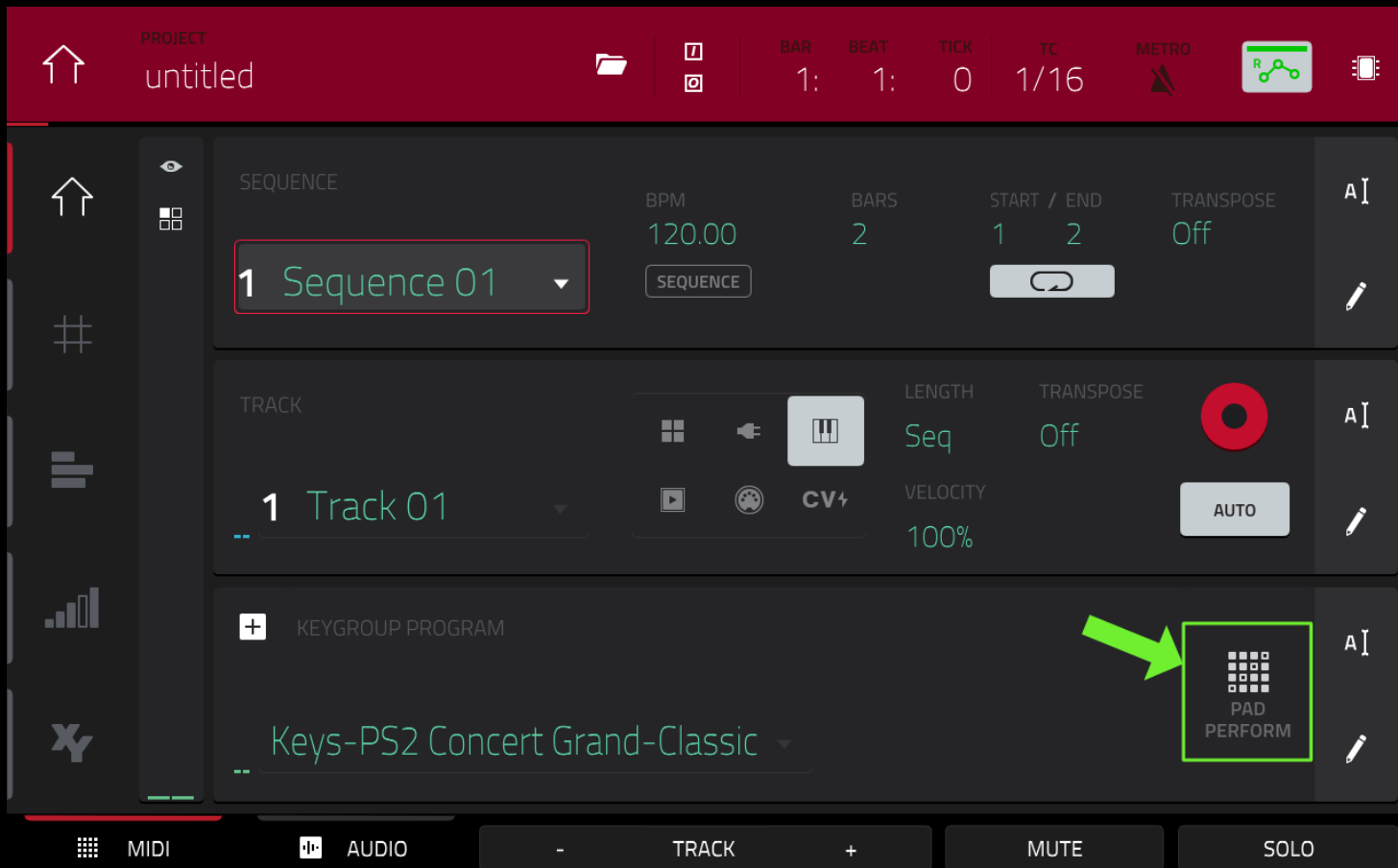


The Media Browser is useful as it can display all the matching results from all your installed expansions.

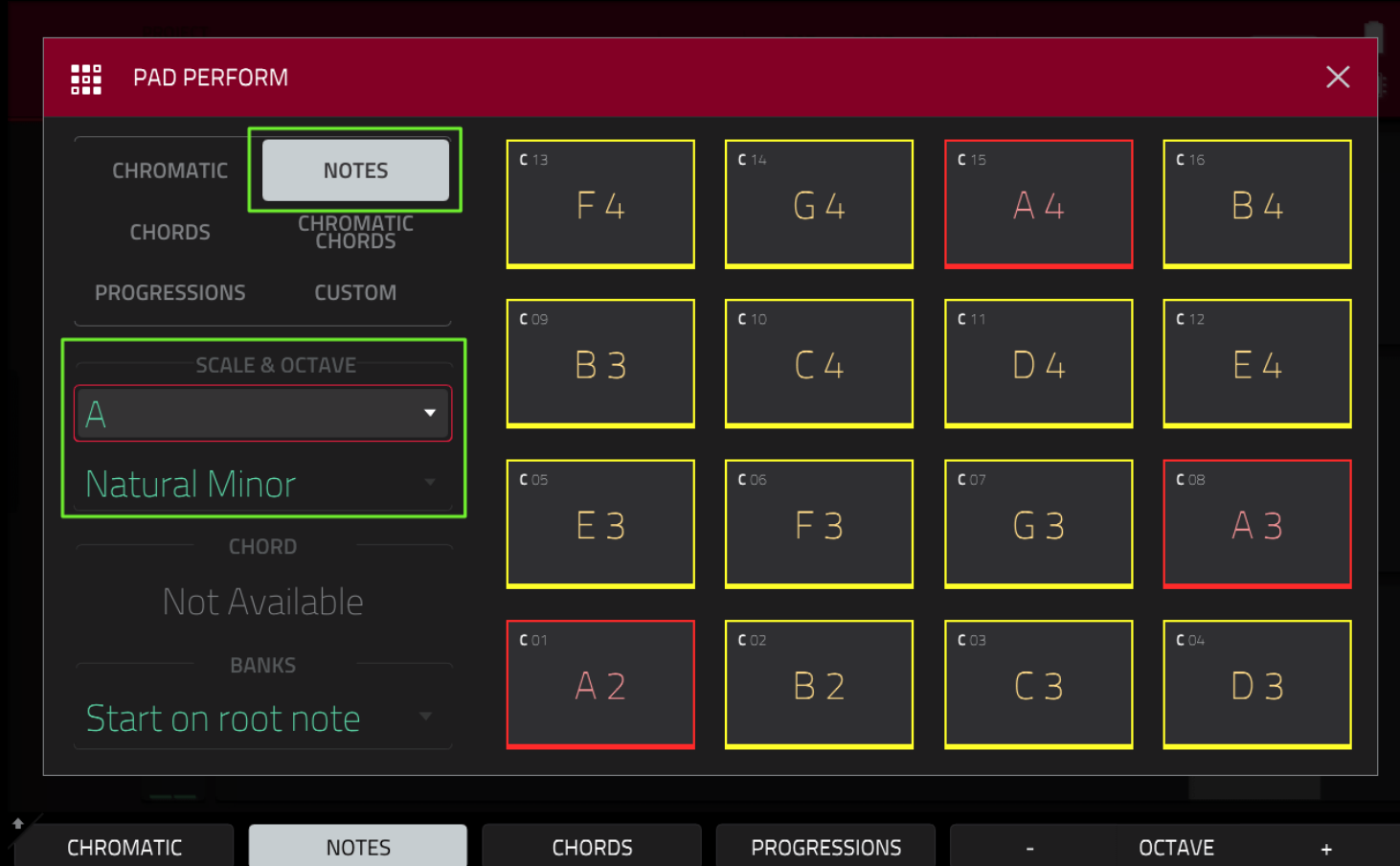
Playing the Instruments with MPC/Force Pads

Instruments can be played using the MPC/Force pads, or using an attached MIDI keyboard. In the MPC, all keygroups will be automatically configured to use 'Pad Perform' mode which will set your pads to only play back notes from specified scales (or even trigger an entire chord from each individual pad). The equivalent in the Force is 'Notes' mode.

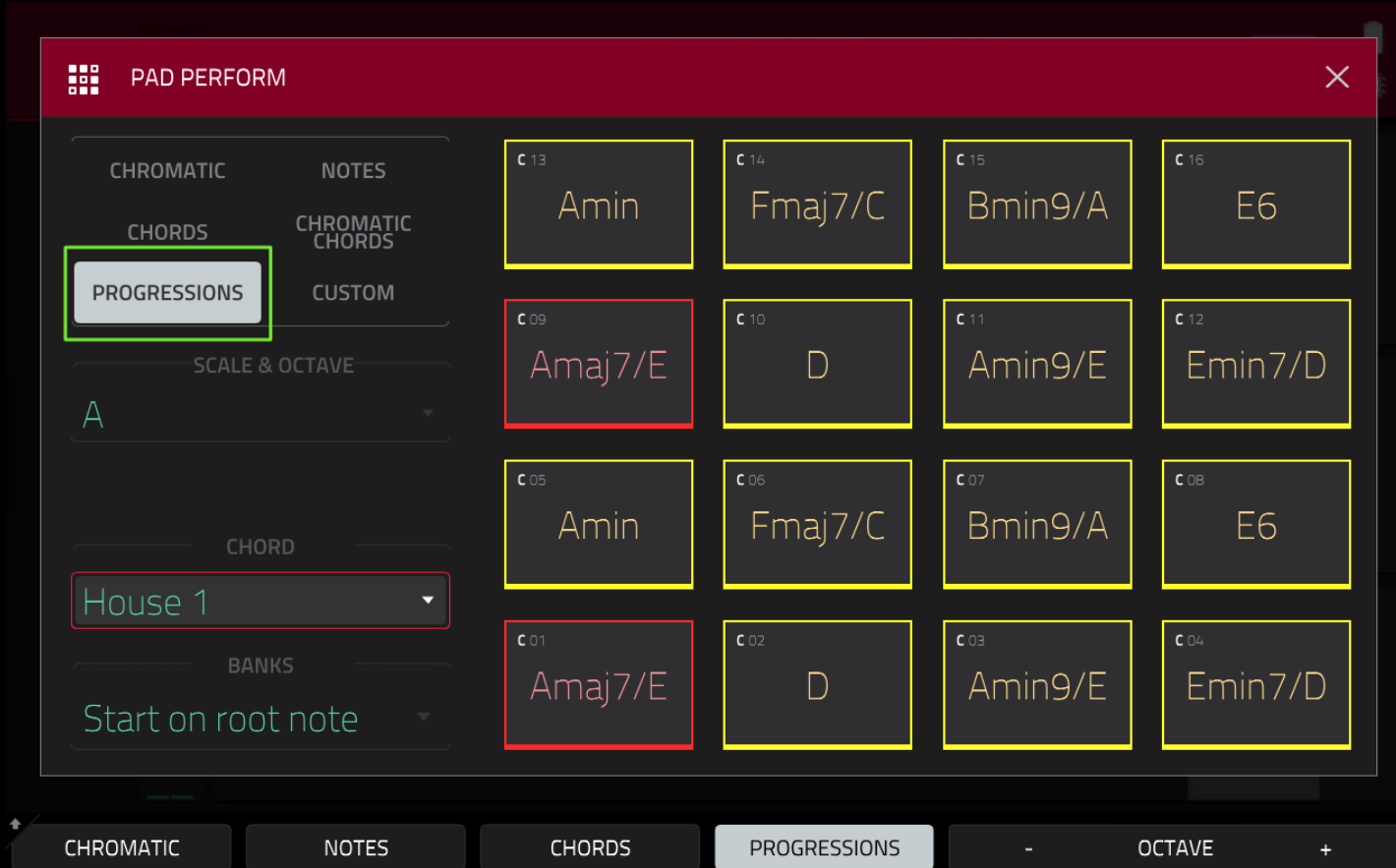
With your instrument assigned to a track, in the MPC go to **Pad Perform Mode** by hitting the **PAD PERFORM** icon on the 'PROGRAM' row in MAIN. Alternatively, press **SHIFT & 16 LEVEL**.



To create melodic leads and riffs, select **NOTES** & under '**SCALE & OCTAVE**' select your preferred scale & musical key.



The 16 pads on your MPC will now only play back the notes in this specific scale. Red pads indicate the 'root' note in the scale. You can also play a complete chord on a single pad by selecting the **CHORDS** or **PROGRESSIONS** options.



Important: If you don't want your pads to be fixed to a particular scale, set PAD PERFORM to 'CUSTOM' mode (which effectively turns off pad perform). Alternatively, select CHROMATIC mode - here the pads remain fully chromatic, but

the lit pads can be set to show which pads fit into a selected scale. In this example, the lit pads show the pads that fit into a D Natural Minor scale (but you are still free to play the unlit pads).

The screenshot shows the 'PAD PERFORM' interface. On the left, a menu has 'CHROMATIC' selected. Below it, 'CHORDS' and 'CHROMATIC CHORDS' are visible. The 'SCALE & OCTAVE' section shows 'D' and 'Natural Minor' selected. The main area is a grid of 16 chord pads, each with a label and a MIDI note number (C 01 to C 16). The pads are arranged in a 4x4 grid. The pads are lit (yellow border) if they fit into the selected scale (D Natural Minor) and unlit (grey border) otherwise. The lit pads are: C 01 (D 5), C 02 (D# 5), C 03 (E 5), C 04 (F 5), C 05 (F# 5), C 06 (G 5), C 07 (G# 5), C 08 (A 5), C 09 (A# 5), C 10 (B 5), C 11 (C 6), C 12 (C# 6), C 13 (D 6), C 14 (D# 6), C 15 (E 6), and C 16 (F 6). The unlit pads are: C 01 (D 5), C 02 (D# 5), C 03 (E 5), C 04 (F 5), C 05 (F# 5), C 06 (G 5), C 07 (G# 5), C 08 (A 5), C 09 (A# 5), C 10 (B 5), C 11 (C 6), C 12 (C# 6), C 13 (D 6), C 14 (D# 6), C 15 (E 6), and C 16 (F 6).

Label	MIDI Note	Status
D 5	C 01	Lit
D# 5	C 02	Lit
E 5	C 03	Lit
F 5	C 04	Lit
F# 5	C 05	Lit
G 5	C 06	Lit
G# 5	C 07	Lit
A 5	C 08	Lit
A# 5	C 09	Lit
B 5	C 10	Lit
C 6	C 11	Lit
C# 6	C 12	Lit
D 6	C 13	Lit
D# 6	C 14	Lit
E 6	C 15	Lit
F 6	C 16	Lit

Please note that we've configured all instruments in Piano Suite to mirror the same note scale found on the original pianos, for example the Concert Grand had a note range of A-1 to B6, so any pads/keys outside of this note range will not emit any sound.

If you are playing with PAD PERFORM set to 'CUSTOM you'll notice that all pads with active notes are illuminated (each piano has its own unique pad colour) so you can quickly identify the usable note range. In 'custom' mode most instruments will start in pad bank B.

Further Resources

To learn more about creating your own MPC programs, sequences, sounds and expansions, please refer to MPC-Tutor's range of **MPC tutorial** books at:

<https://www.mpc-samples.com/section.php/8/0/mpc-tutorials-courses/>

The MPC Instrument Bundle is part of our growing range of MPC/Force expansions – check out our entire range here, with loads of acoustic keys, pianos, drum kits, bass, synths & much, much more:

<https://www.mpc-samples.com/section.php/78/0/mpc-expansions/>

Copyright & License

'MPC Instrument Bundle 5' published by MPC-Samples.com, 2026.

Sample editing, MPC program files, audio previews & artwork by **Pad Pimps & MPC-Samples.com**. Copyright © 2026. All rights reserved.

Full terms & sound licence can be found at
<https://www.mpc-samples.com/terms.php>