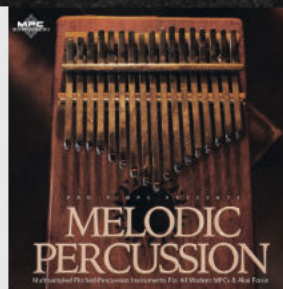
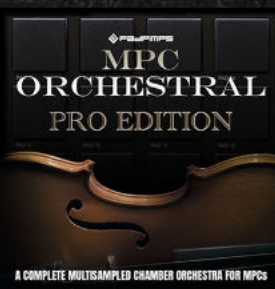


# MPC INSTRUMENT BUNDLE 4

ACOUSTIC & ELECTRIC INSTRUMENTS FOR MODERN MPCs & AKAI FORCE



# Contents

<b>MPC Instrument Bundle: Introduction</b>	<b>3</b>
<b>Install: Standalone MPC &amp; Akai Force</b>	<b>4</b>
<b>Loading Instruments (Standalone MPC/Force)</b>	<b>9</b>
<b>Install: MPC Software/MPC Beats</b>	<b>13</b>
<b>Playing the Instruments with MPC/Force Pads</b>	<b>20</b>
<b>Playing with a MIDI Keyboard</b>	<b>28</b>
<b>Further Resources</b>	<b>30</b>

# MPC Instrument Bundle: Introduction

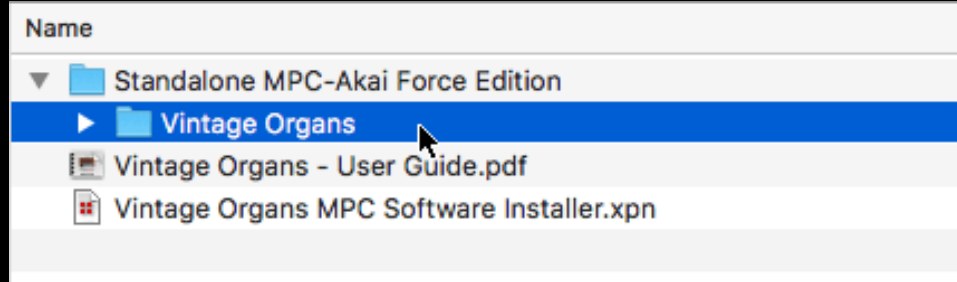
- The MPC Instrument Bundle features an array of real acoustic and electric instruments multisampled and mapped to keygroup programs optimised for all modern MPCs and the Akai Force.
- The bundle features every single instrument, articulation and patch from our bestselling MPC expansion, '**MPC Upright Bass**', '**MPC Orchestral**', '**Electric Keys**', '**Piano Suite**', '**Vintage Organs**', '**Electric Bass**', '**Melodic Percussion**' and '**MPC Horns**'. That's 445 ready-to-load instruments recorded built from over 11,000 instrument multisamples.
- All programs are memory-optimised and are fully compatible with all modern standalone MPCs, the Akai Force, MPC Software and MPC Beats.

# Install: Standalone MPC & Akai Force

*The following instructions are suitable for installing expansions in any modern MPC running in 'standalone' mode as well as the **Akai Force**. The complete bundle contains 8 separate expansion installers, and each expansion is installed with the exact same method as follows.*

First download all the expansions from your File Bank and unzip them using your computer's zip application.

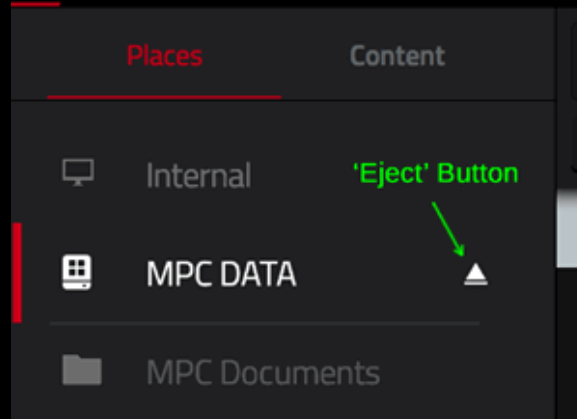
Choose an expansion to install, for example, '**Vintage Organs**'. Enter the '**Standalone MPC-Akai Force Edition**' folder and inside you'll see a sub folder '**Vintage Organs**' – this is the folder we're going to transfer to your standalone MPC or Force.



Akai require that third party expansions are installed to an 'attached disk', such as an SD card, USB drive or internal SATA drive.

For this example, let's assume you use an SD card in your MPC/Force called 'MPC DATA'

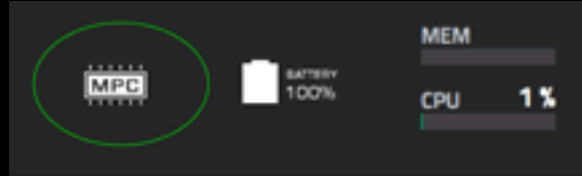
One option is to temporarily remove the SD card from your MPC/Force and connect it directly to the SD card slot on your computer. Remember, if your MPC/Force is currently switched on, first '**eject**' the disk from your machine via **BROWSER > Places:**



You can now put the SD card in your computer's SD card reader.

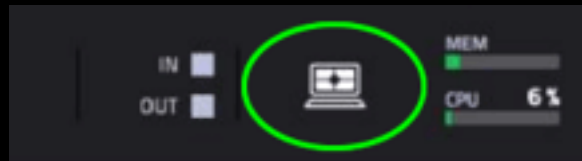
Alternatively, you can connect via '**Controller Mode**' (or '**Computer Mode**' in the Force). This is also the only practical option if you are connecting to an internal SATA drive - **please note that at the time of writing, this method is not supported by the MPC One.**

First connect the 'square' USB port on your MPC/Force to a USB port on your computer using a standard USB cable. **MPC** users should then go to the **MENU** screen and click on the '**MPC Chip**' icon at the top of the page:



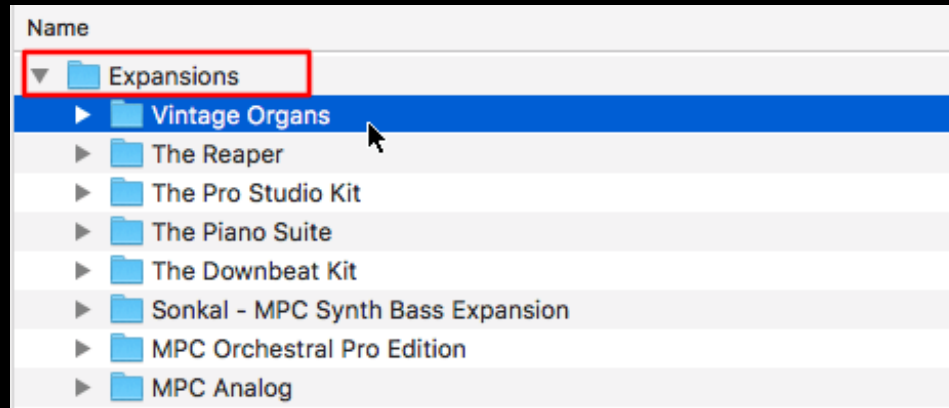
This will bring up the **'ENTER CONTROLLER MODE'** screen. Click on the **CONTROLLER MODE** button at the bottom of the page.

**Akai Force** users should go to the **MENU** screen and tap on the **'Laptop'** icon in the top right of the screen (this time select **'COMPUTER MODE'**).



Whichever connection method you use, your MPC/Force disk will now appear as a 'removable' drive in your computer's file manager (e.g. 'Finder' on a Mac, 'Explorer' on a PC).

If it doesn't already exist, create a folder called **'Expansions'** in the root of your disk - now copy the **'Vintage Organs'** folder inside this 'Expansions' folder.



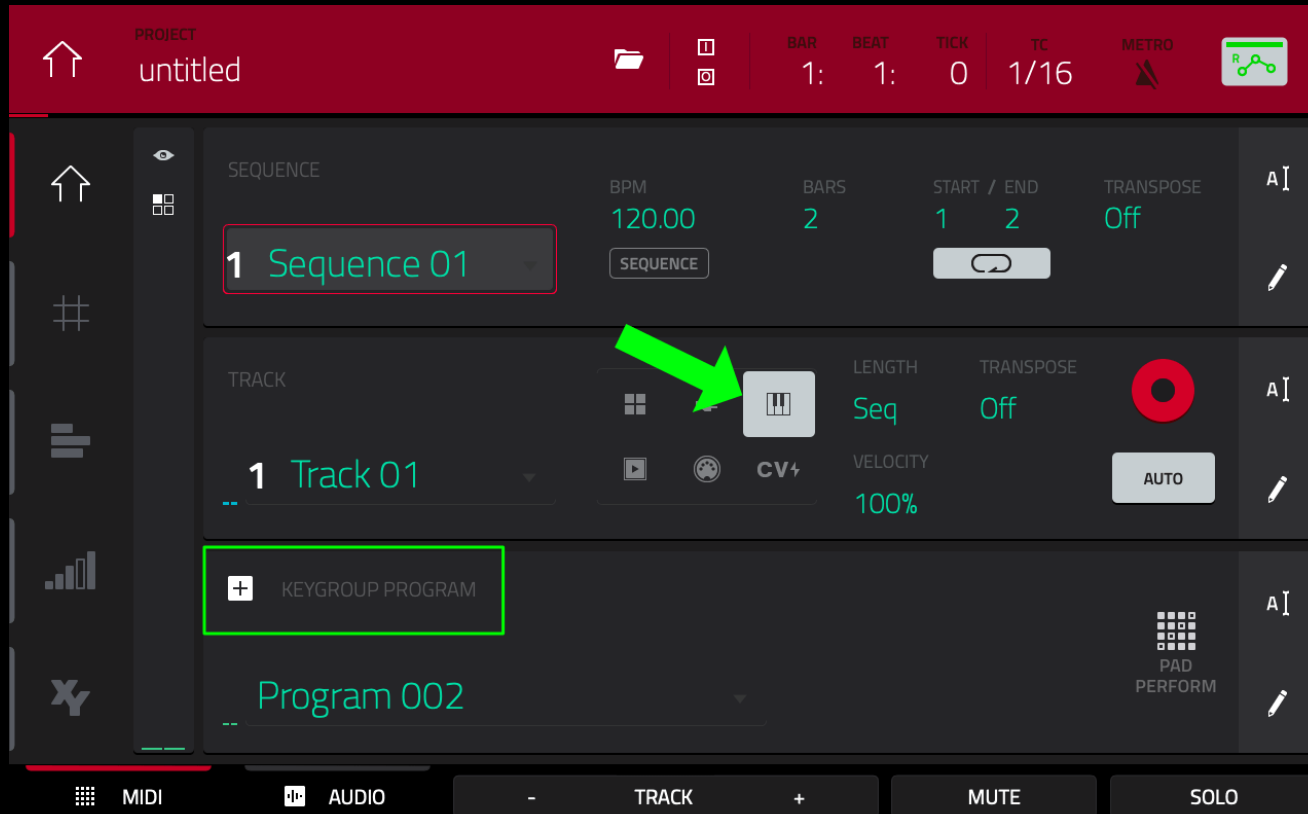
Repeat this process for all six expansions in the bundle, so all six 'standalone' folders are now copied to the 'Expansions' folder on your MPC/Force disk.

All done! If you had physically transferred the MPC disk to your computer you should now eject the disk from your computer and put the disk back in your MPC.

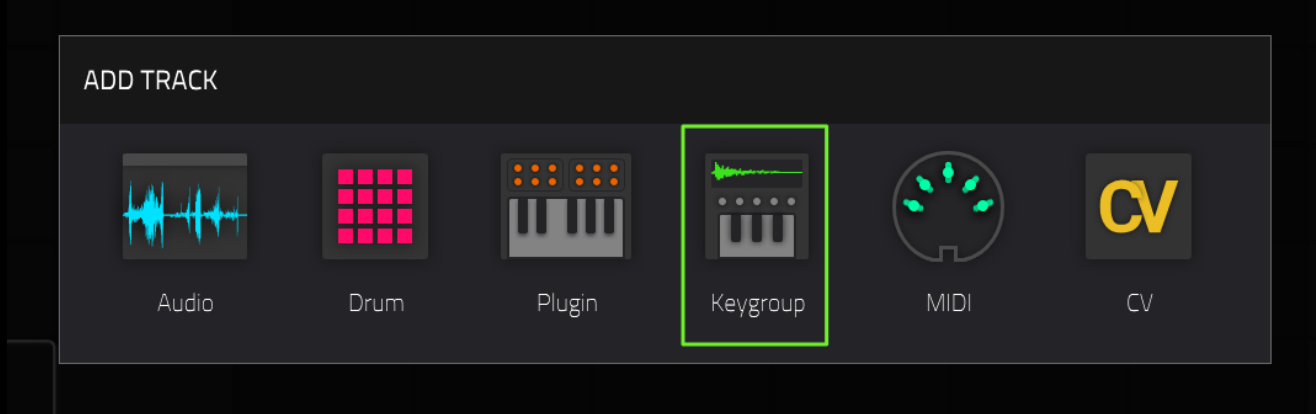
Alternatively, if you used USB transfer then go back to **MENU** and select the computer icon to return to standalone mode - *don't forget to eject/unmount the MPC from your computer first, this avoids any potential data loss.*

# Loading Instruments (Standalone MPC/Force)

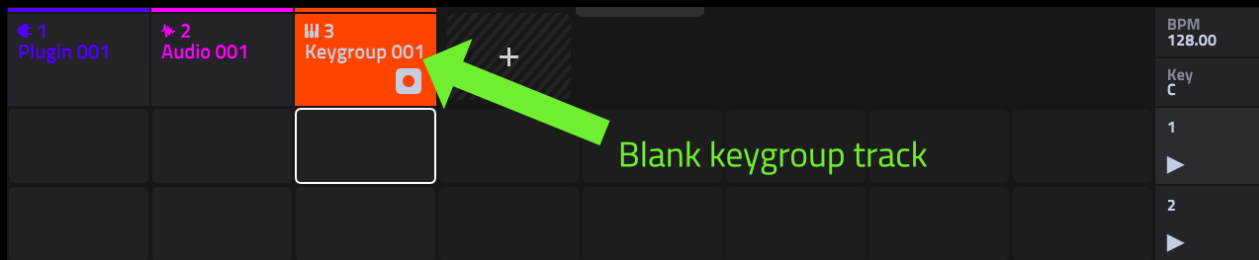
In your MPC, go to **MAIN** and create a **KEYGROUP** type track:



In the Force, hit the '+' icon in the touchscreen matrix and select a **Keygroup** track:

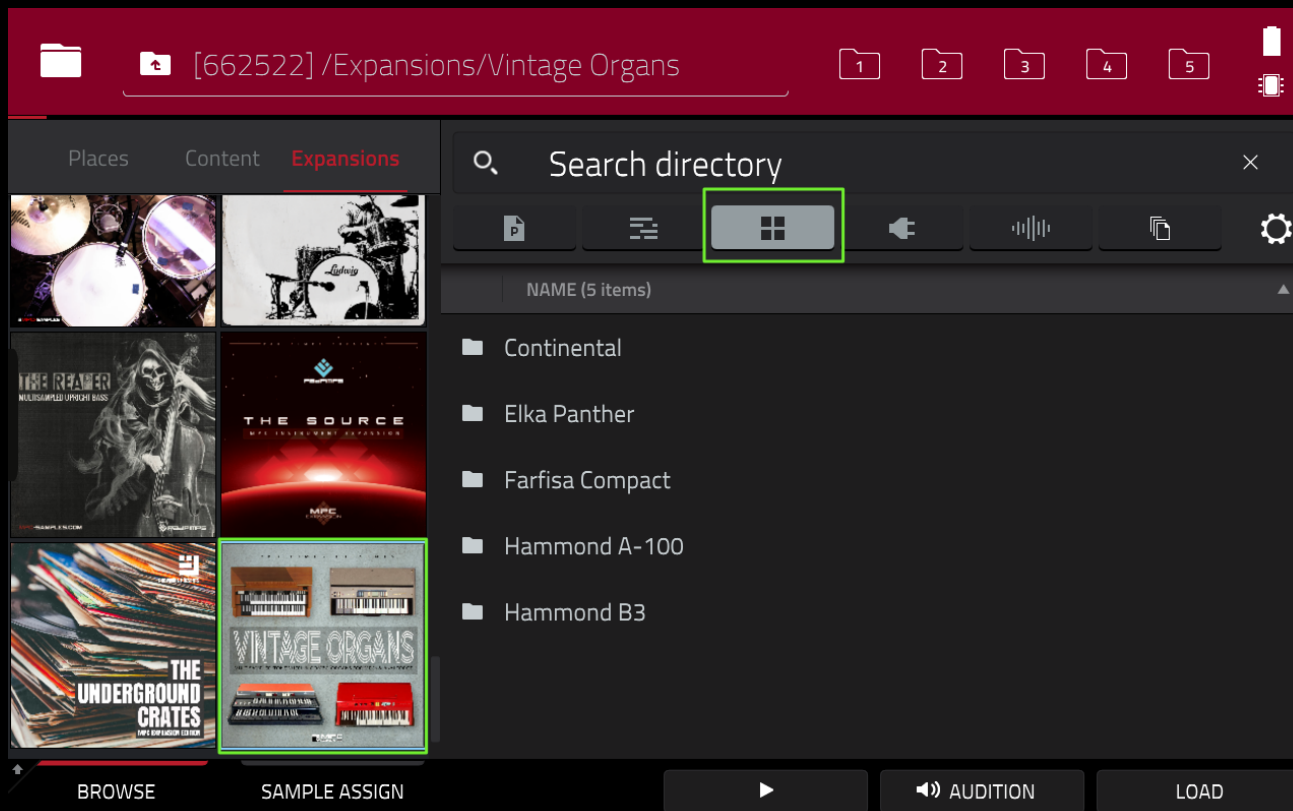


This adds a new blank keygroup track to the matrix:

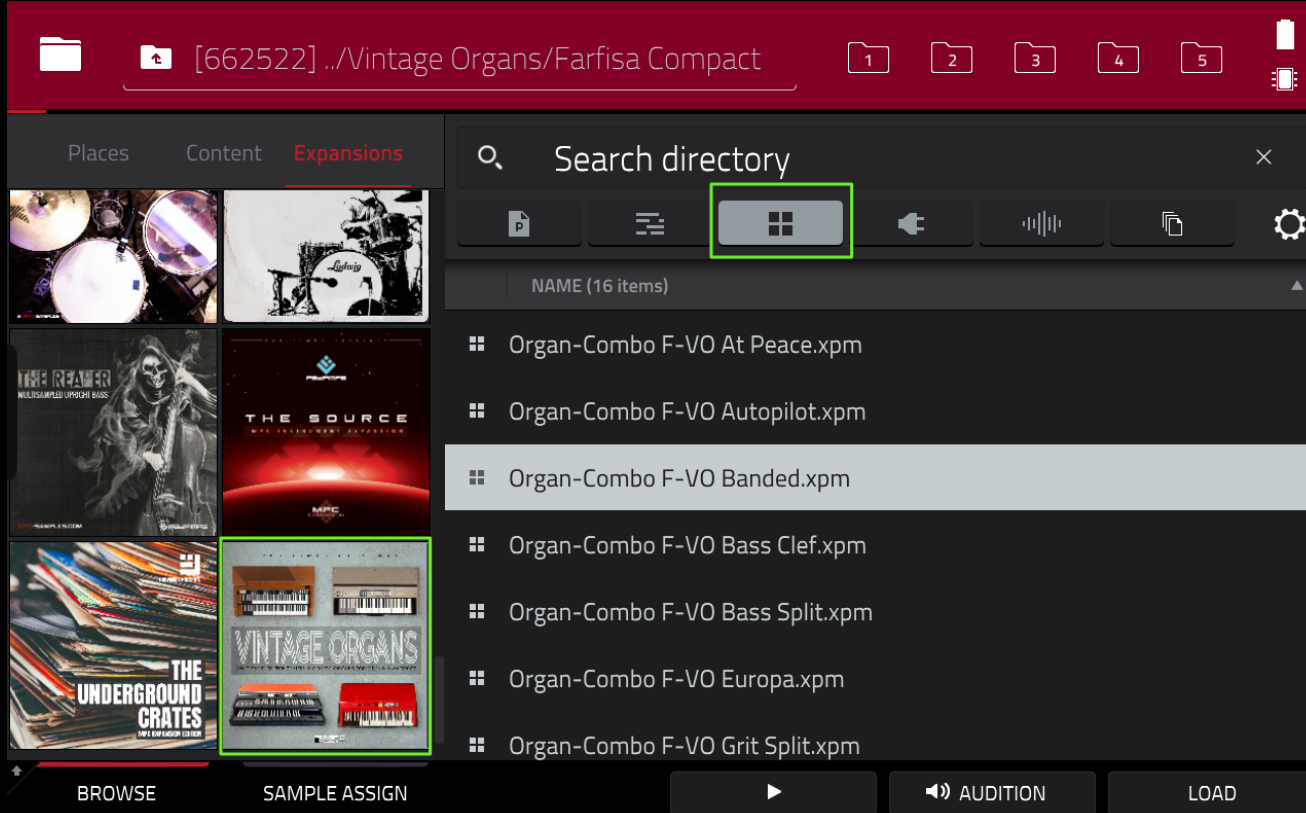


Now go to **'MENU > BROWSER > Expansions'** and tap on the **'Vintage Organs**

thumbnail. On the right side, select the **PROGRAM** filter to view the instrument groups (organised by organ model):



Double tap to enter a folder to view the available instruments in this group:



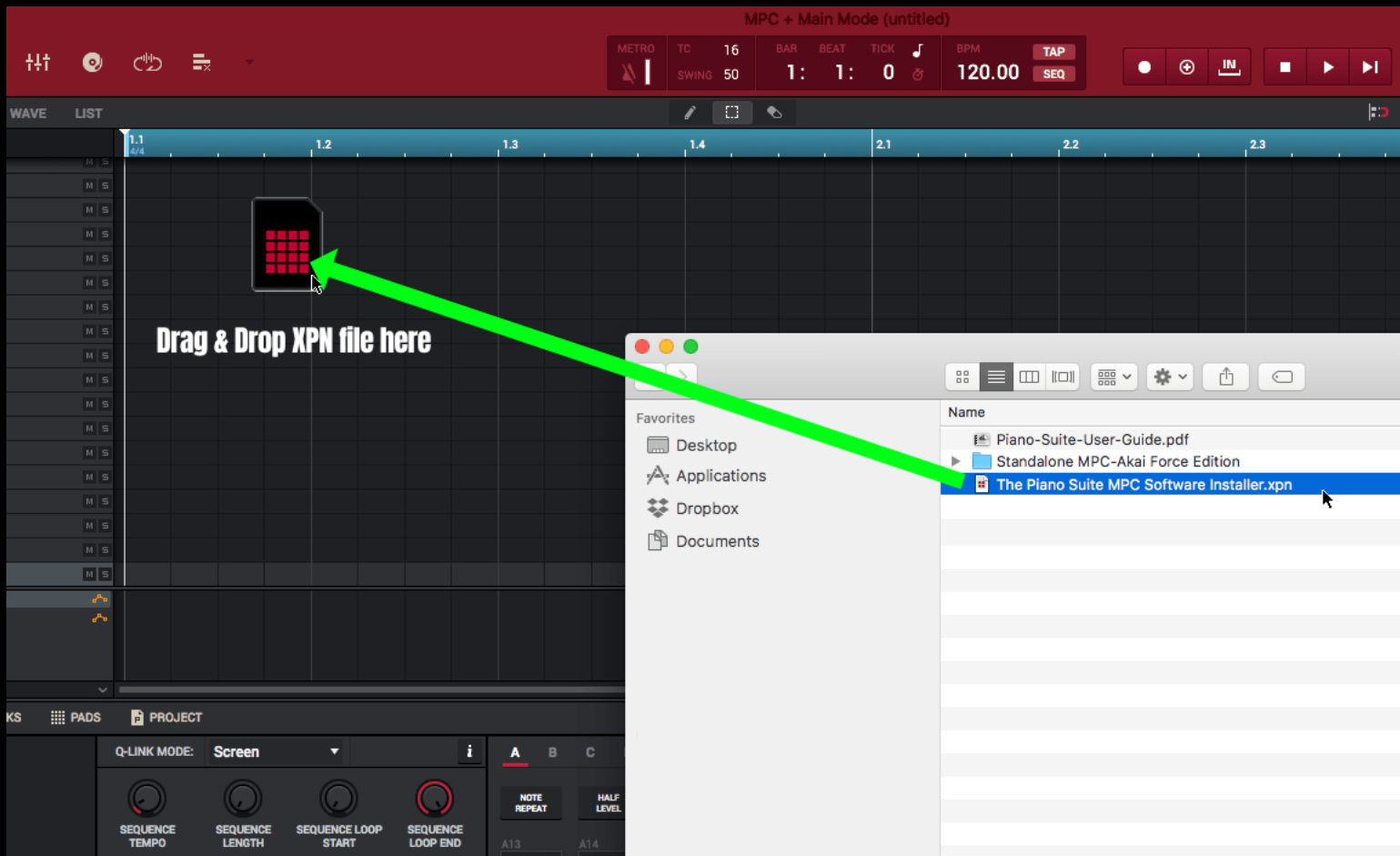
Single tap an instrument program to hear a preview (requires '**AUDITION >AUTO**'). To load the instrument to the current track, either double tap the XPM file or single tap and press **LOAD**

# Install: MPC Software/MPC Beats

The bundle contains 8 individual expansions, simply install each one using the following guide (instructions are suitable for both MPC Software & MPC Beats) – you can also find an install guide for each individual expansion within its own download files.

After downloading all the expansions from your File Bank, unzip them to your computer. Now choose an expansion to install (for example, **The Piano Suite 2**).

Locate the '**Piano Suite 2 Expansion Installer.XPN**' file and drag & drop it directly into the MPC Software/MPC Beats UI from your computer's File Explorer/Finder:



*Please note that an XPN file **cannot** be installed directly from the MPC Browser, nor can it be installed by 'double clicking' the XPN file.*

After dragging the XPN into the software UI you will see the following:

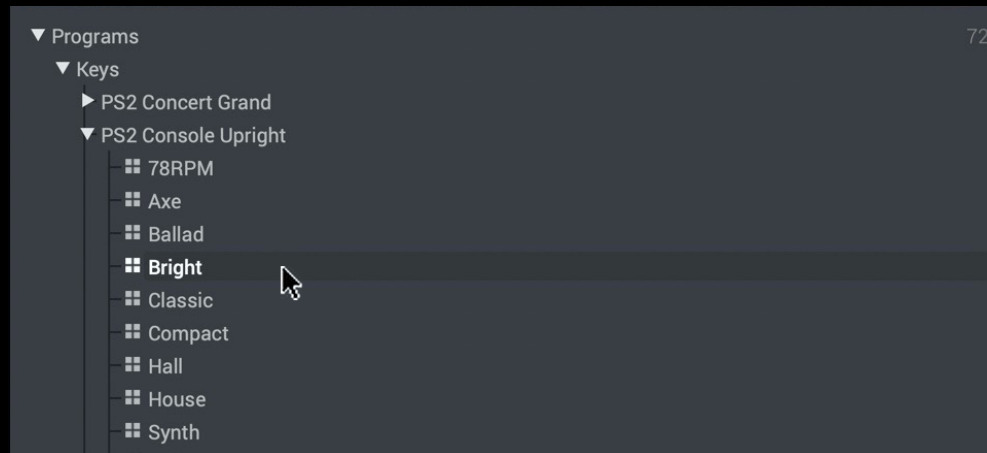


Select '**Import**' to install the expansion. Now repeat the above procedure for all expansions in the bundle.

Once installed you can open your expansions in the **Expansion Browser** ('X' on your keyboard). For example, click on the '**Piano Suite**' thumbnail:



Expand the 'Programs' group to reveal the different instruments:



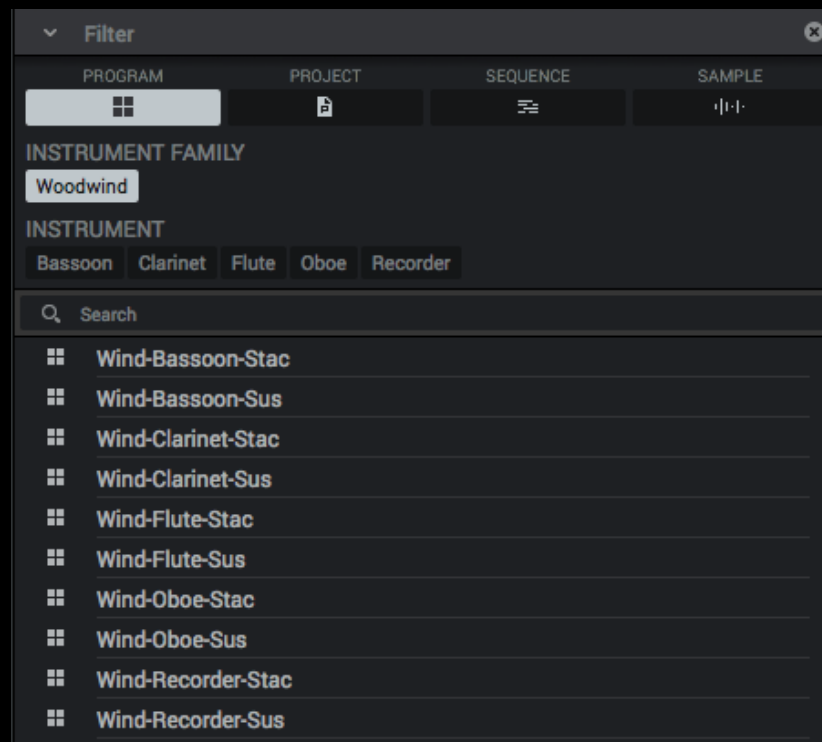
Single click to hear the program preview - this requires 'Autoplay' enabled:



Double click a program to load it to the current 'keygroup' type track. Alternatively, drag the program directly into your project.

You can also browse the expansions using Media Browser ('B' on your keyboard). Here, you can filter your display by **Instrument Family** and or **Instrument**.

In the example below, I've selected only **Woodwind** instruments:

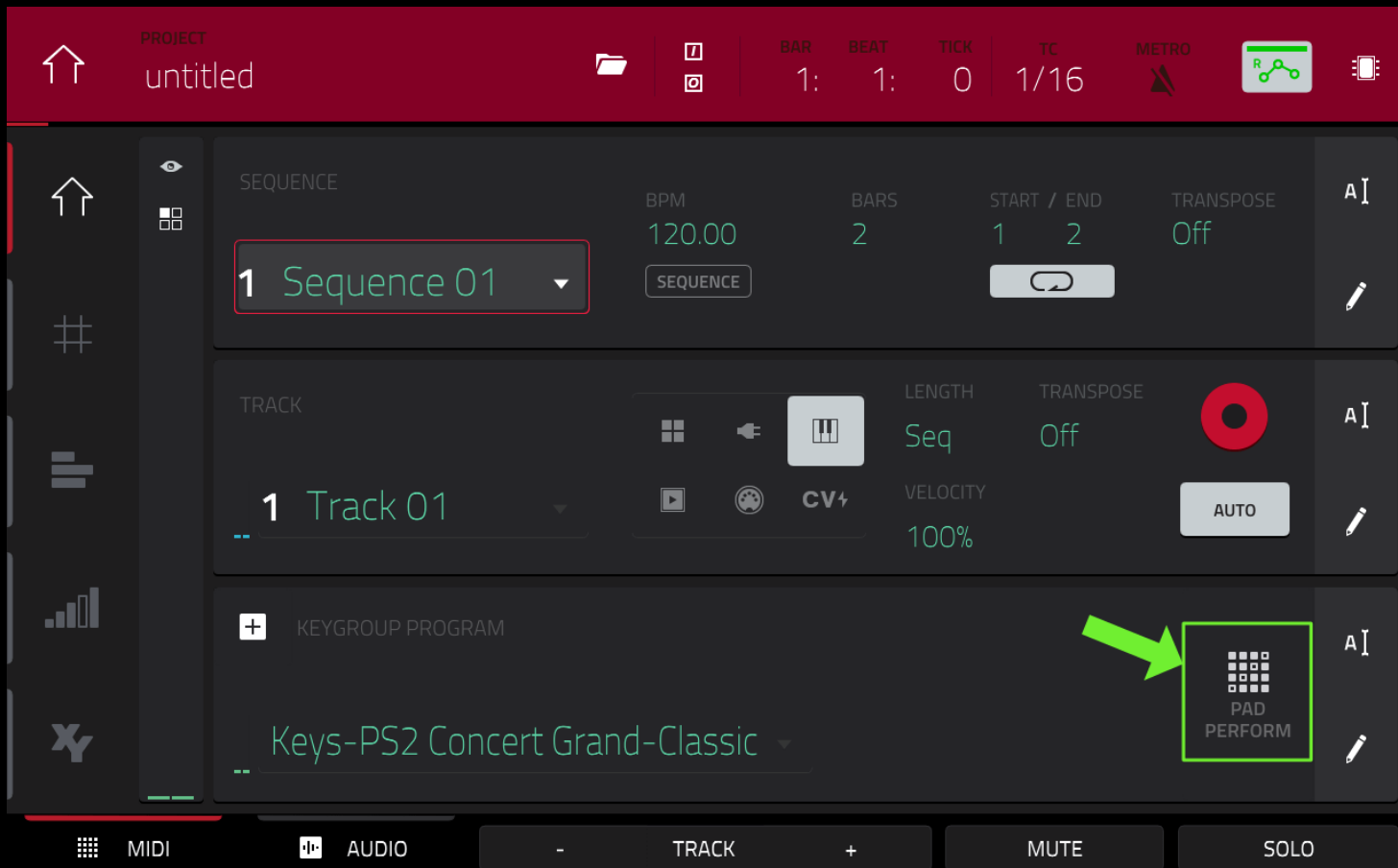


The Media Browser is useful as it can display all the matching results from all your installed expansions.

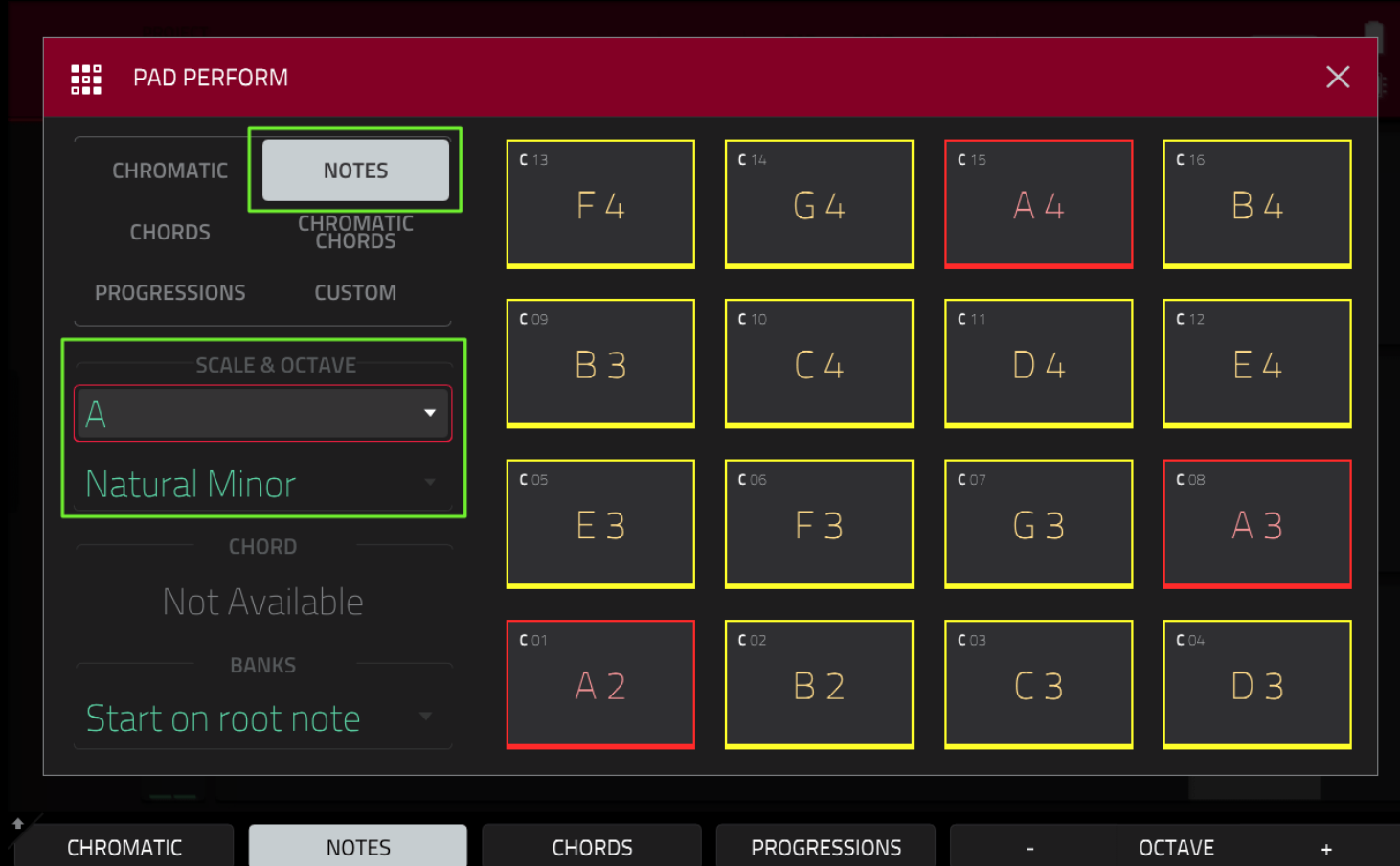
# Playing the Instruments with MPC/Force Pads

Instruments can be played using the MPC/Force pads, or using an attached MIDI keyboard. In the MPC, all keygroups will be automatically configured to use 'Pad Perform' mode which will set your pads to only play back notes from specified scales (or even trigger an entire chord from each individual pad). The equivalent in the Force is 'Notes' mode.

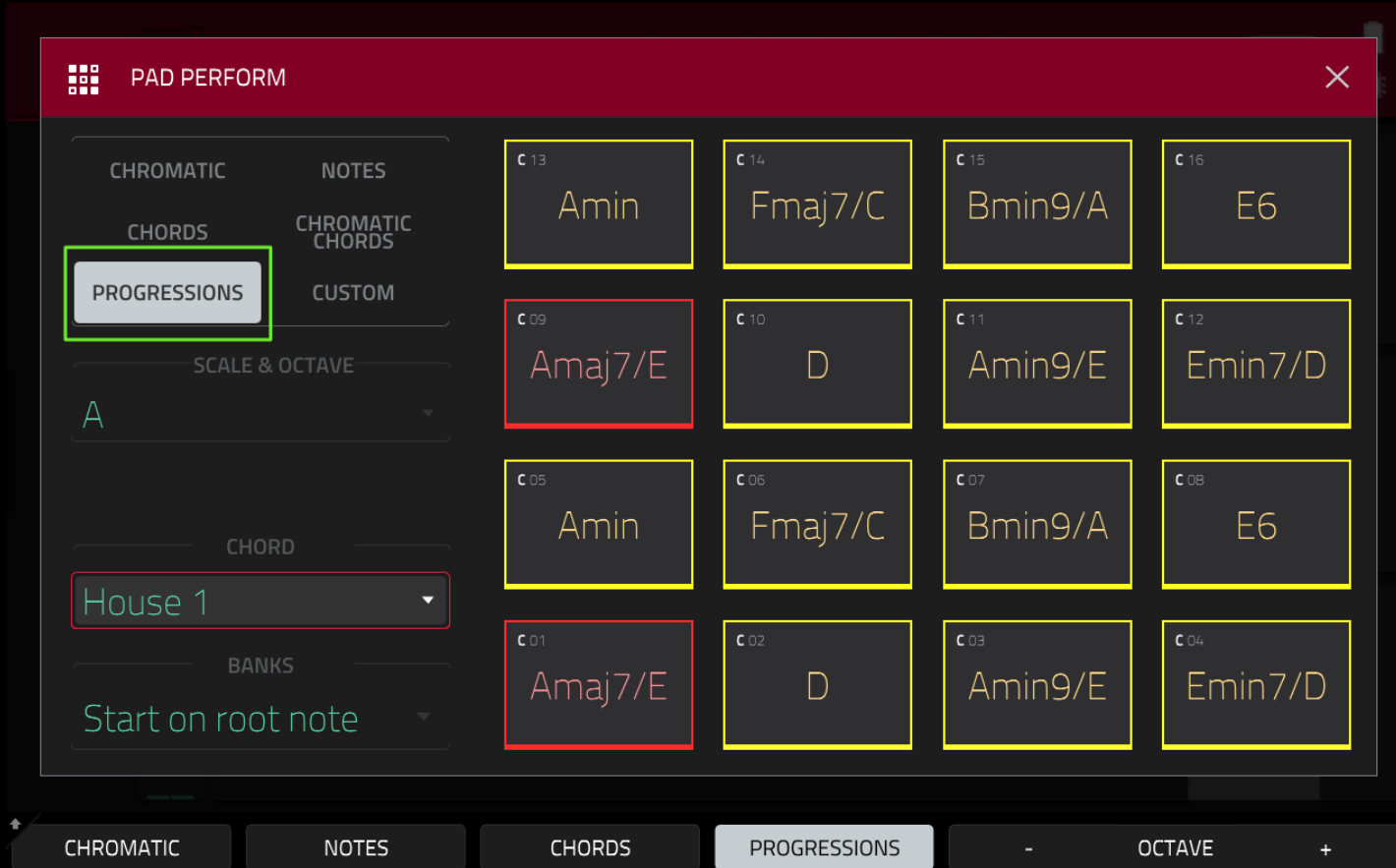
With your instrument assigned to a track, in the MPC go to **Pad Perform Mode** by hitting the **PAD PERFORM** icon on the 'PROGRAM' row in MAIN. Alternatively, press **SHIFT & 16 LEVEL**.



To create melodic leads and riffs, select **NOTES** & under '**SCALE & OCTAVE**' select your preferred scale & musical key.



The 16 pads on your MPC will now only play back the notes in this specific scale. Red pads indicate the 'root' note in the scale. You can also play a complete chord on a single pad by selecting the **CHORDS** or **PROGRESSIONS** options.



**Important:** If you don't want your pads to be fixed to a particular scale, set PAD PERFORM to 'CUSTOM' mode (which effectively turns off pad perform). Alternatively, select CHROMATIC mode - here the pads remain fully chromatic, but

*the lit pads can be set to show which pads fit into a selected scale. In this example, the lit pads show the pads that fit into a D Natural Minor scale (but you are still free to play the unlit pads).*

**PAD PERFORM**

**CHROMATIC** NOTES  
CHORDS CHROMATIC CHORDS  
PROGRESSIONS CUSTOM

SCALE & OCTAVE  
D  
Natural Minor  
CHORD  
Not Available  
BANKS  
Start on root note

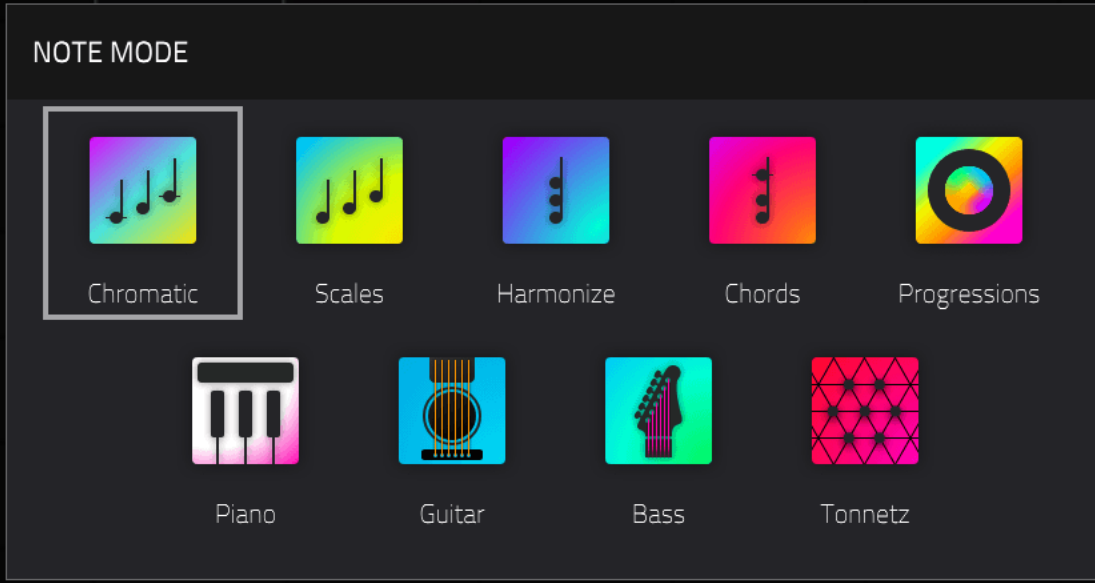
C 13 D 6	C 14 D#6	C 15 E 6	C 16 F 6
C 09 A#5	C 10 B 5	C 11 C 6	C 12 C#6
C 05 F#5	C 06 G 5	C 07 G#5	C 08 A 5
C 01 D 5	C 02 D#5	C 03 E 5	C 04 F 5

CHROMATIC NOTES CHORDS PROGRESSIONS - OCTAVE +

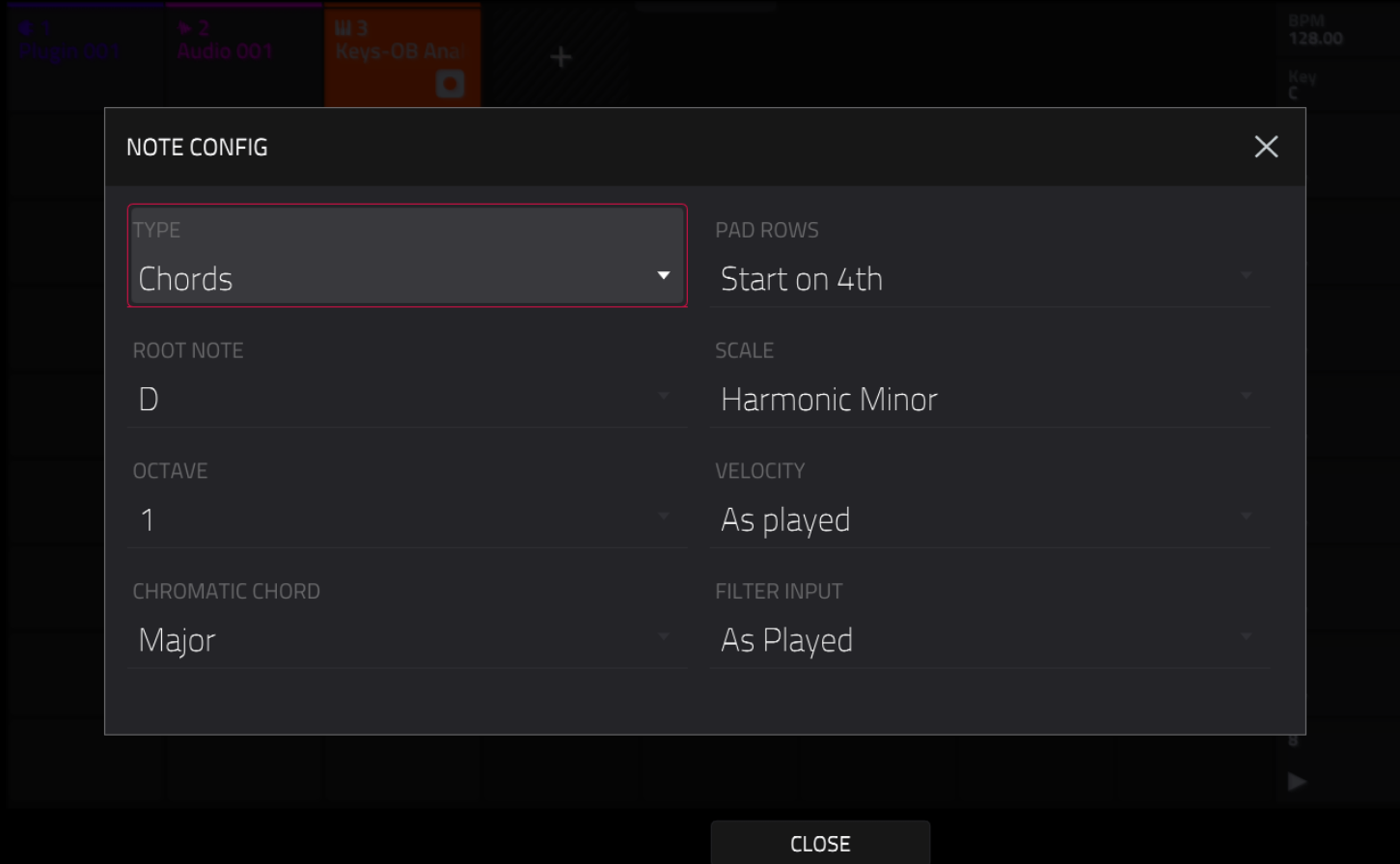
Please note that we've configured all instruments in Piano Suite to mirror the same note scale found on the original pianos, for example the Concert Grand had a note range of A-1 to B6, so any pads/keys outside of this note range will not emit any sound.

*If you are playing with PAD PERFORM set to 'CUSTOM you'll notice that all pads with active notes are illuminated (each piano has its own unique pad colour) so you can quickly identify the usable note range. In 'custom' mode most instruments will start in pad bank B.*

In the Force, hit the **NOTE** hardware button to enter **NOTES** mode. Now press and hold the **NOTE** button to select the preferred note mode:



Press **SHIFT** and **NOTE** to launch the full **NOTE CONFIG** screen:



You can now play the instrument across the Force's 64 pads.

# Playing with a MIDI Keyboard

Instruments can be also played using an attached MIDI keyboard, which we recommend for creating the most realistic sounding performances. For standalone MPCs/Force you can connect a USB keyboard directly to your MPC's USB port and you should immediately be able to play the instrument assigned to the current track, no additional configuration needed.



If your MPC has Bluetooth support you can configure a Bluetooth controller via **Preferences > Bluetooth**. Alternatively connect a keyboard via the 5 pin MIDI ports.

If you are using the MPC Software/MPC Beats you can connect your controller to your computer directly via USB or use a 5 pin MIDI cable connected to a suitable USB-MIDI interface. If you have an MPC controller such as the MPC Touch, MPC Renaissance or MPC Studio already connected to your computer, you use the MPC itself as the MIDI interface.

For more information about connecting MIDI controllers to the MPC, check out my dedicated article:

<https://www.mpc-tutor.com/mpc-midi-tutorial-connecting-midi-controllers/>

# Further Resources

To learn more about creating your own MPC programs, sequences, sounds and expansions, please refer to MPC-Tutor's range of **MPC tutorial** books at:

<https://www.mpc-samples.com/section.php/8/0/mpc-tutorials-courses/>

The MPC Instrument Bundle is part of our growing range of MPC/Force expansions – check out our entire range here, with loads of acoustic keys, pianos, drum kits, bass, synths & much, much more:

<https://www.mpc-samples.com/section.php/78/0/mpc-expansions/>