

The image shows a close-up of a Yamaha MPC keyboard. The keyboard has various colored buttons: yellow for 'STRING 1-4', red for 'BRASS 1', green for 'LOW HPF', 'LOW LPF', and 'LOW RESL', and black for 'HIGH HPF', 'HIGH LPF', and 'HIGH RESL'. There are also several sliders and a 'SHORT A' button. A black rectangular overlay is centered on the keyboard, containing the text 'MPPC' in a large, outlined, stylized font, and 'CS80' in a large, multi-colored, outlined font below it. Below the 'CS80' text, the words 'ANALOG SYNTH INSTRUMENTS FOR MPC' are written in a smaller, white, sans-serif font.

MPPC

CS80

ANALOG SYNTH INSTRUMENTS FOR MPC

Contents

MPC CS80: Introduction	3
Installation Notes	5
Install: Standalone MPC & Akai Force	6
Loading Instruments (Standalone MPC/Force)	10
Install: MPC Software/MPC Beats App	13
MPC Q-LINK Macros	17
Expression Control	22
Further Resources	24
Copyright & License	25

MPC CS80: Introduction

MPC CS80 is our tribute to a one of the most iconic and revered synths of all time, the Yamaha CS-80. It contains **100 instruments** built with **1863 samples** mapped to 'keygroup' programs, including:

- 16 basses
- 22 lead & brass
- 22 keys & organs
- 27 pads & strings
- 13 plucks & percussion

Each instrument features carefully multisampled CS80 patches, utilizing sustained looped samples for optimised memory usage in any MPC/Force model.

In addition to the multisampled analog tones we've added 3 further oscillator components which can be used to add extra depth and texture to each patch, all of which are adjustable via the Q-links (see later in this guide for full details). The 'sub'

layer adds additional low end body, a 'harmonic' layer adds higher frequency richness, and the sampled noise layer is used to add extra vintage texture or crunchy attack elements to the sound. Adjust the volume of each layer with the Qlinks and even change the type of noise sample used (7 different noise samples are available, including white noise, pink noise, tape, three different vinyl and static).

Each instrument also features up to four Q-link adjustable FX controls for tweaking the levels of lofi grit, modulation (chorus, phaser etc) and ambience (reverb/delay). The instrument's portamento (note glide) controls and program volume can also be adjusted with the Q-links.

As these are built from standard MPC keygroup programs you can also dive in and make even deeper adjustments using the MPC's familiar 'track edit' UI.

Everything is 100% compatible with the arpeggiator and PAD PERFORM ('Notes Mode') as well as support for dynamic control of LFO, portamento and pitch bend.

This expansion requires approximately 1.8GB of disk space for installation and is compatible with MPC 2.13+ and Force 3.3+. It also fully supports MPC Beats and the latest **MPC3 firmware**.

Installation Notes

The standalone installation & usage instructions in this guide use the latest 'MPC3' firmware in the examples, however the process is virtually identical in the Akai Force and MPC 2.

MPC Software installation uses MPC 2.x in the examples, which is also identical for MPC Beats.

You can always view the most up-to-date expansion installation instructions here:

Standalone MPC/Force:

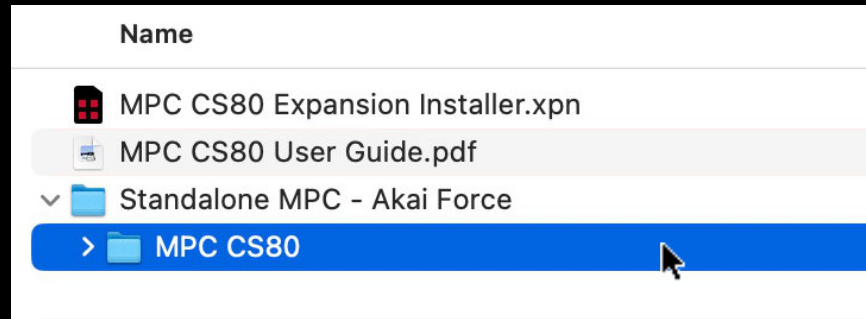
<https://mpc-samples.com/article/standalone-mpc-force-expansion-installation>

MPC Software/MPC Beats

<https://mpc-samples.com/article/install-mpc-software-expansions-guide>

Install: Standalone MPC & Akai Force

After downloading the expansion, extract the zip file contents to your computer. Enter the '**Standalone MPC-Akai Force**' folder and inside you'll see a sub folder '**MPC CS80**' – this is the folder we're going to transfer to your MPC/Force.



Expansions must be installed to either an **SD card**, a **USB drive** or, if you have one, an internal **SATA disk**.

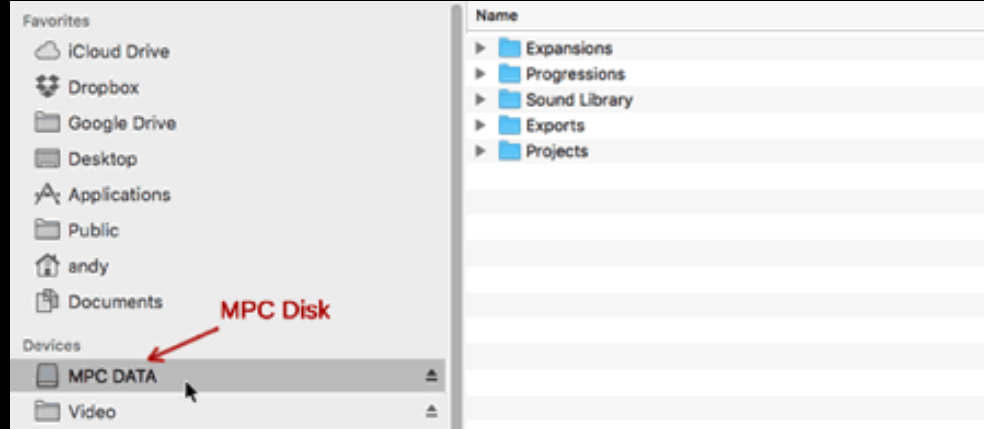
The first step is to mount this 'MPC disk' on your computer. If you use an SD card or USB disk, you can just eject the disk from your MPC/Force and physically insert it into your computer's SD card reader or USB port.

Alternatively, connect your MPC or Force via USB to your computer and go to **MENU** and hit the '**MPC chip**' icon at the top of the screen (this is the '**Laptop**' icon in the Force).

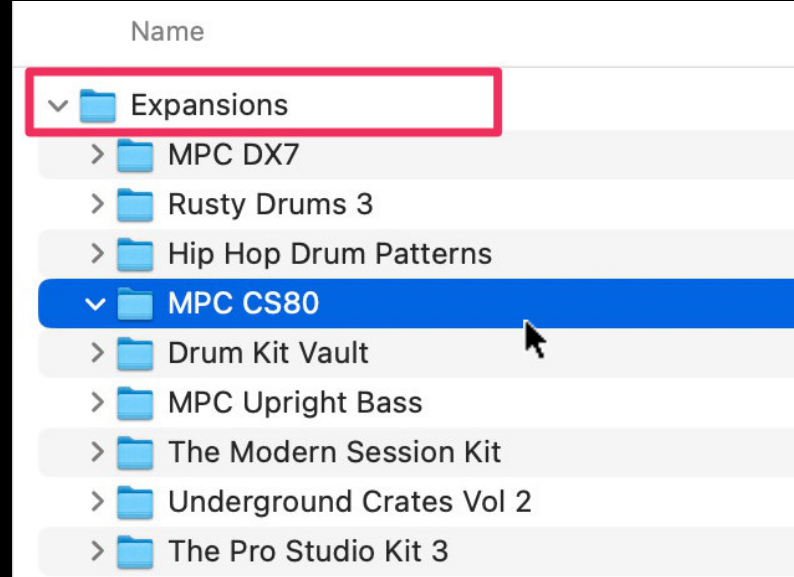


Now select **CONTROLLER MODE** ('**COMPUTER MODE**' in the Force).

Whichever connection method you choose, your MPC disk should now appear as a removable drive in your computer's file manager (e.g. Finder or File Explorer). Click on the drive to open its file system:



If it doesn't already exist, create a folder called '**Expansions**' in the root of your disk. Now copy the '**MPC CS80**' standalone expansion folder *inside* this '**Expansions**' folder.

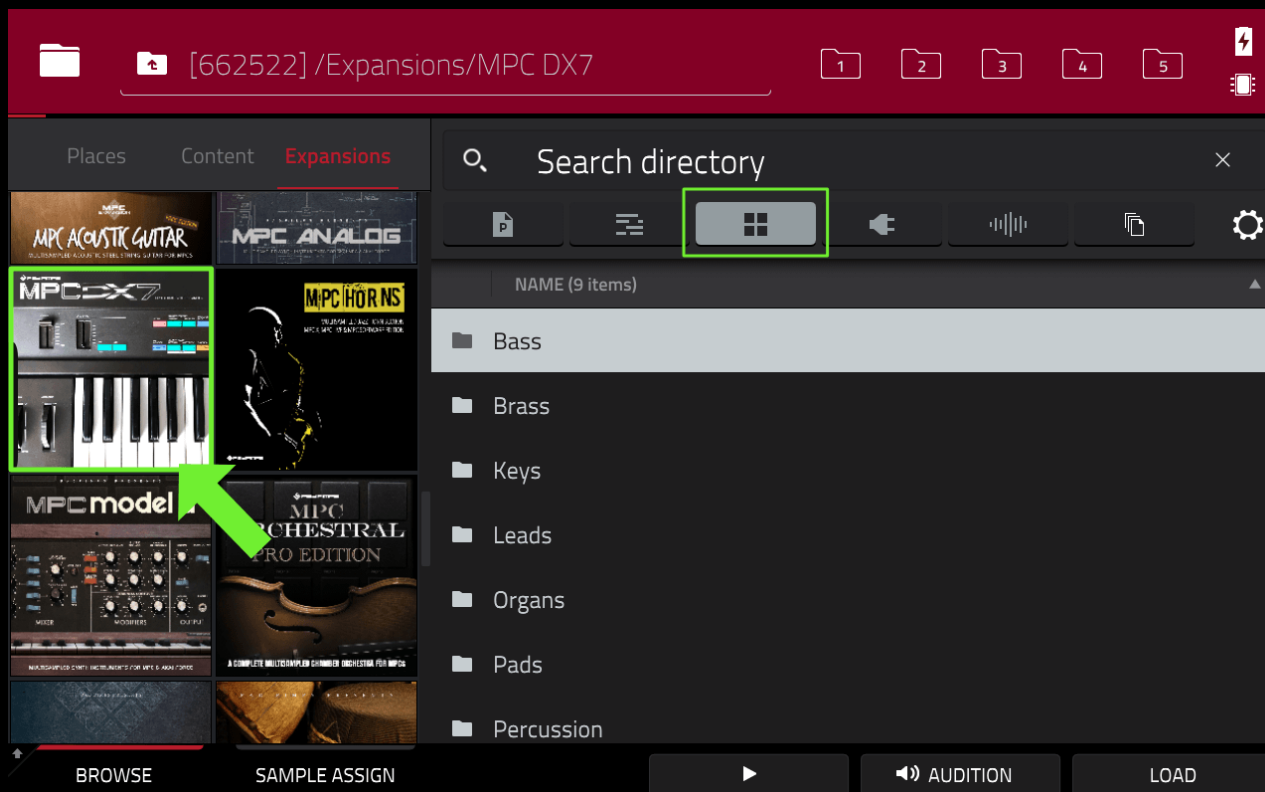


All done! If you had physically transferred the MPC disk to your computer you should now eject the disk from your computer and put the disk back in your MPC.

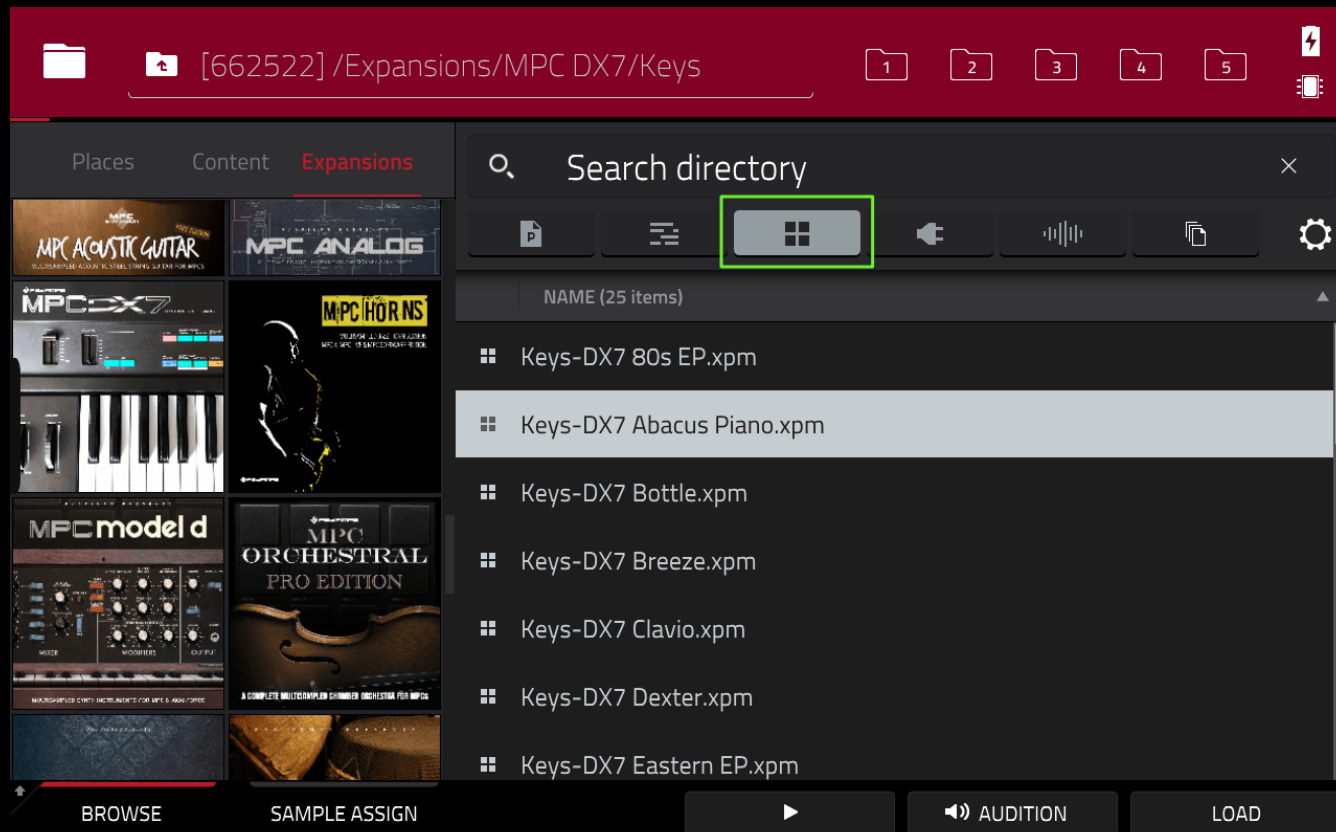
Alternatively, if you used USB transfer then go back to **MENU** and select the computer icon to return to standalone mode - *don't forget to eject/unmount the MPC from your computer first, this avoids any potential data loss.*

Loading Instruments (Standalone MPC/Force)

Go to 'MENU > BROWSER > Expansions' and tap on the 'MPC CS80 thumbnail. On the right side, you'll see a number of folders:



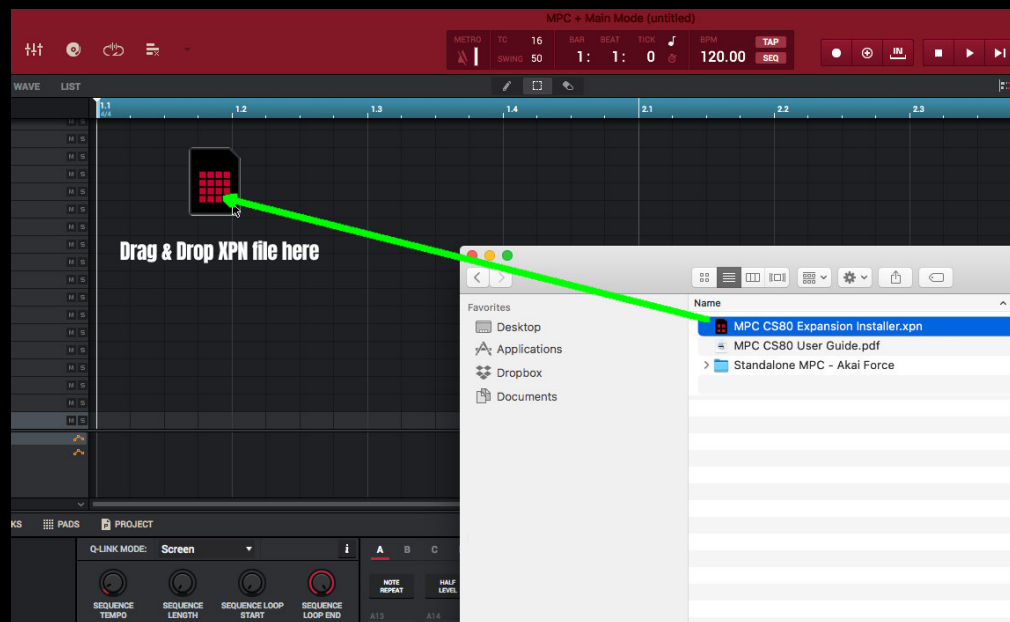
Here you'll find all the instruments organised by sound type - double tap any of the folders to enter, for example 'Keys' and make sure you select the **PROGRAM** filter to view all the instruments in this group:



Single tap the program to hear a preview (requires '**AUDITION >AUTO**'). Tap **LOAD TO NEW TRACK** or to load the instrument to the current track, either double tap the XPM file or single tap and press **LOAD**.

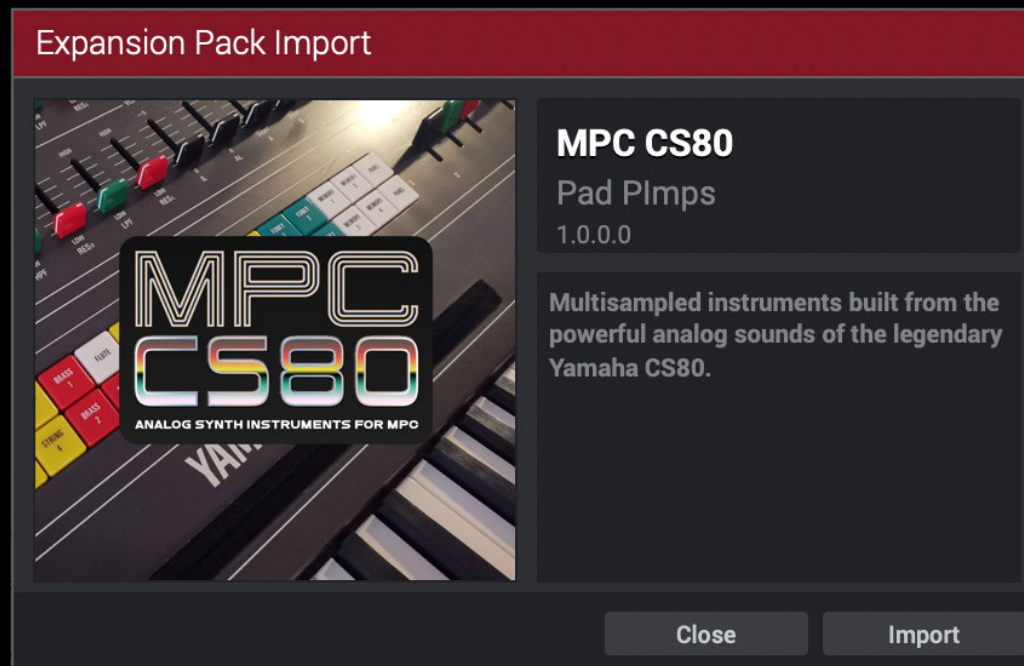
Install: MPC Software/MPC Beats App

Locate the 'MPC CS80 Expansion Installer.XPN' file and drag & drop it directly into the MPC Software UI from your computer's File Explorer/Finder:



If you have problems getting this method to work, open the File Browser (shortcut 'F') and navigate to the location where you extracted the XPN. You can now drag the XPN from here.

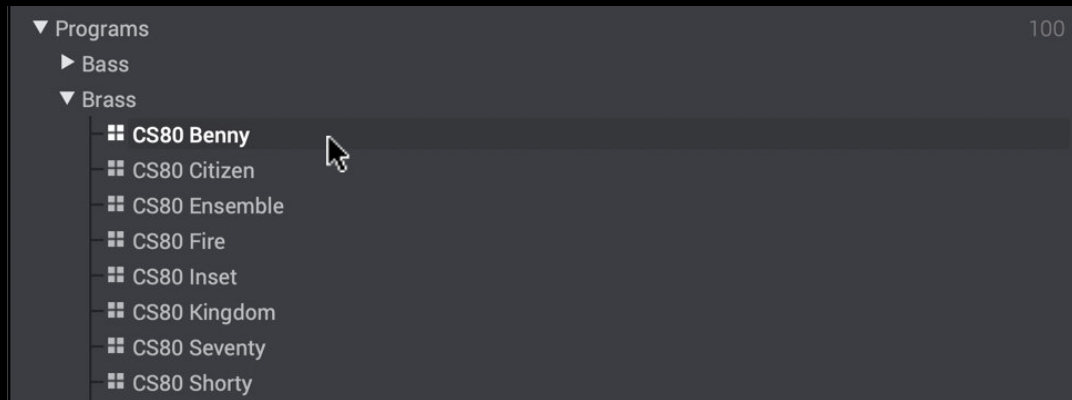
After dragging the XPN into the software UI you will see the following:



Select **'Import'** and once installed, open the **Expansion Browser** ('X' on your keyboard) and click on the **'MPC CS80'** thumbnail to view:



Expand the '**Programs**' group to reveal all the instruments, all organised into sub-categories based on the instrument type:



Single click any instrument to hear its preview (requires 'Autoplay' enabled):



Double click a n instrument to load it to the current sequencer track. Alternatively, drag the instrument directly into your project. All instruments must be assigned to a '**KEYGROUP**' type track in your sequencer.

MPC Q-LINK Macros

Each instrument features pre-mapped MPC 'Q-LINK' dials to give MPC users quick hands-on control of a number of different sound-shaping parameters.

To access these controls in an MPC, hold down the **Q-LINK button** and switch from the default SCREEN to **TRACK** mode. The Q-LINKS will now remain fixed to the pre-mapped control parameters which can be used for all of the instruments in this expansion:



We've provided some additional information on the Q-LINK parameters in the table below.

Q-LINK	Control	Details
<i>Column 1:</i>		
Q13	Sub Level	Sine wave oscillator to add more depth and lower end
Q9	Harmonic Level	Triangle/square/saw to add an additional harmonic aspect
Q5	Noise Level	Volume of the sampled noise layer, giving additional texture or crunchy attack to the instrument
Q1	Noise Type	A 'sliced' sample chain containing 7 different noise samples; 1. white, 2. pink, 3. tape, 4. vinyl A, 5. vinyl B, 6. vinyl C, 7. static. A setting of 'pad' disables the noise. ALL is the same as '1' (pure white noise).
<i>Column 2:</i>		
Q14	Chorus/Modulation	Controls the amount of modulation effect added, typically either chorus, phaser or flanger

Q10	Delay Level	Amount of delay added
Q6	Ambience Mix	This controls the main ambience effect, which will most commonly be reverb
Q2	Custom FX	This effect varies across instruments
<i>Column 3: additional parameter control for Q2 effect (delay or reverb)</i>		
Q15	Sample Rate	Reduce the sample rate of the instrument
Q11	Bit Depth	Reduce the bit rate for a more crunchy sound
Q15	Delay Time/Room Size	Delay sync timing or 'room size' (for reverbs)
Q11	Feedback/Reverb time	Length of ambient effect
<i>Column 4:</i>		
Q16	Portamento Time	how fast the current note slides from the previous note
Q12	Portamento Legato	set this to ON if you only want glide to occur when notes overlap
Q8	Tuning	Fine tune the instrument to match non-standard song pitches

Q4	Program level/volume	reduce this if your instrument level begins to clip
-----------	----------------------	---

***Akai Force Users:** These Q-Link macros can also be accessed in the Force's by holding down the **KNOBS** button and selecting 'Track'. The assignments are the same as described above (i.e. QLINK 1 = Knob 1 = 'Noise Type'), but as the Force uses horizontally mapped rows of knobs, the arrangement will differ.*

Deeper Editing

Q-link control is meant for quick, hands-on tweaks of select instrument parameters. If you need even more in-depth, granular control over any of the layers or FX, you can deep dive into **TRACK EDIT** and directly edit any parameter or adjust any of the deeper FX settings.

This is of course entirely optional but does open up lots more possibilities for sound design and means you can really make all the instruments your own. If you want to learn more about creating and editing advanced instrument programs, check out my MPC Bible course:

<https://www.mpc-samples.com/product.php/268/mpc-bible/>

Expression Control

We've added support for a number of expression controls in all instruments which can be accessed via MIDI keyboard controls. If you don't have an MPC Key model you can connect a MIDI keyboard via USB, MIDI DIN or Bluetooth to provide modulation wheel and pitch bend control.

The mod wheel provides control of the 'LFO amount' which in most instruments will typically control the amount of volume and panning modulation (i.e. tremolo).

If you are using MPC3 you can also control mod wheel and pitch bend from the Q-LINKS. Hold down the Q-LINK button and select 'MIDI' mode:



For more information about connecting MIDI controllers to the MPC, check out my dedicated article:

<https://www.mpc-tutor.com/mpc-midi-tutorial-connecting-midi-controllers/>

Further Resources

MPC CS80 is part of our growing range of MPC and Force expansions – check out our entire range here, with loads of acoustic keys, pianos, drum kits, bass, synths & much, much more:

<https://www.mpc-samples.com/section.php/78/0/mpc-expansions/>

If you need help learning how to use your MPC, check out MPC-Tutor's range of **MPC tutorial** books and courses at:

<https://www.mpc-samples.com/section.php/8/0/mpc-tutorials-courses/>

Copyright & License

'MPC CS80, published by MPC-Samples.com, 2025.

All recordings, MPC program files & audio previews by **Pad Pimps**. Copyright © 2025. All rights reserved. User guide by MPC-Samples.com. Copyright © 2025. All rights reserved.

Full terms & sound licence can be found at

<https://www.mpc-samples.com/terms.php>